

Ahhhh ...
Spring!
Earth Day
April 22, 2010

Presorted Std.
U.S. Postage
PAID
Indianapolis, IN
Permit 8365

ADDRESS SERVICE REQUESTED

Indianapolis Medical Society
631 East New York Street
Indianapolis, IN 46202-3706

stability matters.

If there is one thing to learn from the recent financial turmoil, knowing who to trust is paramount.

Medical Protective, a proud member of Warren Buffett's Berkshire Hathaway, has always believed that to provide our healthcare providers the best defense in the nation, our financial stability needs to be *rock-solid*, stronger than any other company.



Stability even in the worst of times.

Medical Protective is the only medical professional liability insurance company to protect their healthcare providers through all the business and economic cycles of the last 110 years, including the tough economic times of *the Great Depression*. We are also proud to have provided unmatched defense and stability during all the medical crises.

We have received higher ratings from A.M. Best and S&P than any other carrier in the healthcare liability industry.

Trust Stability. Trust Medical Protective.

 **MEDICAL
PROTECTIVE**

Strength. Defense. Solutions. Since 1899.
a Berkshire Hathaway Company

Contact Dale Krynak today for a medical insurance check-up and a FREE Indiana medical expert guide.

- Call: 800-4MEDPRO ext. 3931
- Email: experts@medpro.com
- Visit: www.medpro.com
- Contact your local Medical Protective agent

COME HOME



Luxury Living on the Lake



Discover Indianapolis' best kept secret.

Custom-built communities on the water—only 20 minutes north of downtown Indianapolis.

**NOW SELLING WATERFRONT HOMESITES:
GEIST LAKE, MORSE LAKE, LAKE CLEARWATER AND LAKE KILLBUCK.**

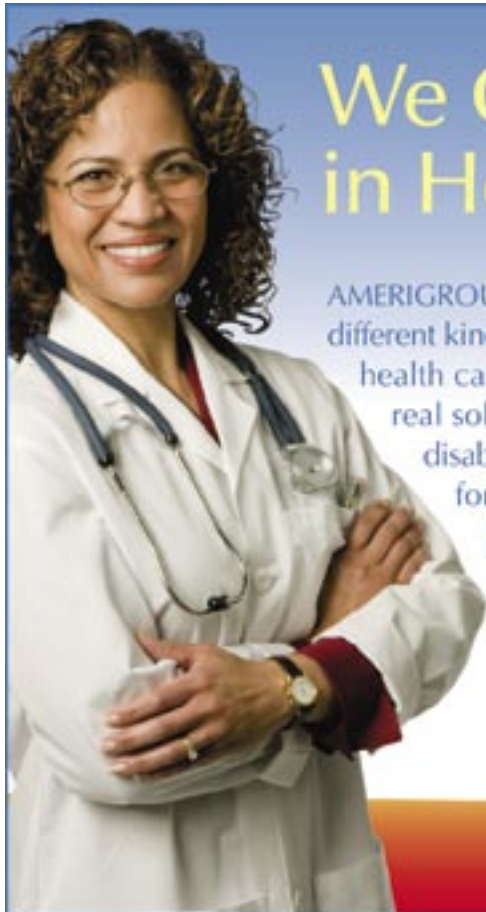
Contact **ROB BUSSELL** for lot information, pricing and financing options.
Call (317) 845-0270 ext. 24
or email rob@robbussell.com for more information.



The Marina Limited Partnership

www.marinalimited.com





We Offer Real Solutions in Health Care Every Day

AMERIGROUP Indiana, Inc. (AMERIGROUP Community Care) is a different kind of health care company. We focus exclusively on public health care programs like Medicaid, CHIP and Medicare, offering real solutions for families, children, seniors and people with disabilities. Participating providers have access to online tools for authorizations and claims and disease management programs for asthma, diabetes, heart disease and behavioral health. To see real stories of how we help members, visit us at www.amerigroupcorp.com.

AMERIGROUP
Community Care

PRIVATE BANKING

MEET YOUR FINANCIAL GOALS WITH SERVICE THAT EXCEEDS YOUR EXPECTATIONS.

At the Indianapolis area's largest locally owned national bank, our private bankers have a time-tested way of doing things. They put the client first. They ask questions and take a genuine interest in your well-being and financial health. And every private banker has the authority to make the prompt decisions that can favorably impact your bottom line. So if you're looking for someone who'd rather shake your hand than send a fax, call Susan Hamilton at 261-2270. Service is something she takes personally.



Susan Hamilton
Susan Hamilton
Vice President, Private Banker

Official monthly publication of the
Indianapolis Medical Society
631 E. New York St.
Indianapolis, Indiana 46202-3706
Phone: (317) 639-3406
Fax: (317) 262-5609
Web Page: <http://www.imsonline.org>
E-mail: ims@imsonline.org

Indianapolis Medical Society President
John C. Ellis, MD

President-Elect
Jeffrey J. Kellams, MD

Direct copy for publication and inquiries regarding advertising to:

Executive Vice President and
Editor, *The IMS Bulletin*
Beverly Hurt

Associate Editor, *The IMS Bulletin*
Marcia K. Hadley

The Bulletin invites news from and about members of the Indianapolis Medical Society. Copy deadline: First of the month preceding month of publication.

Advertising: Rates available upon request. Advertisers should provide electronic files by the first of the month preceding publication. Placement of advertisements, except for premium spaces, will be throughout the publication at the discretion of the editor.

Statements and conclusions of authors that are published in *The Bulletin* are solely those of the authors and do not necessarily reflect Indianapolis Medical Society policy or position. The Indianapolis Medical Society makes no representation or warranty as to their accuracy or reliability. Advertisements published in *The Bulletin* do not imply approval or endorsement by the Indianapolis Medical Society, but represent solely the viewpoint of the advertiser or their agent.

ATTENTION SOCIETY MEMBERS

We like to feature photographs or other artwork shared by IMS members on the cover of *The Bulletin*. Submit photographs, artwork, etc., to Beverly Hurt at the Society Office, bhurt@imsonline.org.

The Bulletin is your magazine. Share your views by submitting reprints of your published articles; articles written expressly for *The Bulletin*; quips; short stories; brief comments; ideas; cartoons, etc.

Remember the *Indianapolis Medical Society Foundation* when planning your will. (Contribution form included in this issue.) Unless otherwise specified, your contribution will be directed toward medical scholarships.

Bulletin Subscriptions: \$36.00 per year
AMA Web Page: <http://www.ama-assn.org>
IMS Web Page: <http://www.imsonline.org>

in this issue

Special Features

President's Page

Is Your School Corporation Complying with the Model Pest Control in Indiana Schools Policy?
John C. Ellis, MD 7

Special Feature

Pearl Harbor Day: An I.U. Medical School Student's Memories from December 7, 1941
Kenneth R. Woolling, MD 8

Did You Know ...

Highlighting a New Benefit 12

Project Health

Thank you, David V. Poer, MD
Carrie Jackson Logsdon, Director 16

April IMS Birthdays

A New Feature 17

In Summary

..... 19

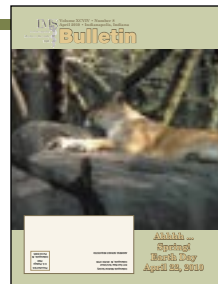
Talent Gallery

..... 22

Departments

About Our Cover 5
Advertisers' Index 22
Bulletin Board 11
Classified Advertising www.imsonline.org
CME & Conferences 20
IMS Leadership 18
In Memoriam 14

about our cover



Ahhhh... Spring. Our cover photograph celebrating Earth Day 2010 was taken by Marcia Hadley at the Indianapolis Zoo in April 2005. Hurray, for the lazy, sunny days ahead.

April is:

Alcohol Awareness Month & National Child Abuse Prevention Month

The Best. Physicians' Homes

www.LanternRd.com

- 4 B/4.1 B, Custom Home
- 2.2 AC
- Woodland Privacy
- Convenient to Fall Creek Pkwy
- Stunning Chef's Kitchen
- Hardwoods
- 2-Story Family Room



7801 Lantern Rd., Indianapolis - \$640,000



Lavolettehomes.com



www.ApplecrossDr.com

- 4 B/5.3 B, Custom Home
- 1.36 AC
- Dramatic 2-Story Great Room
- Paneled Den
- Pool w/Pool House
- Great Basement



230 Applecross Dr., Brownsburg - \$999,950



SONNIE LAVIOLETTE,
REALTOR® / BROKER

317-752-5957

the
Lavolette
group



F. C. Tucker Company



Is Your School Corporation Complying with the Model Pest Control in Indiana Schools Policy?

Physicians are generally aware of the hazards of acute poisoning from pesticides. Recently two children in Utah died when a “professional” application of pesticides was too close to an occupied home. Reportedly, an exterminator dropped pellets in burrow holes to kill voles and a toxic gas accumulated in the home sickening all family members and resulting in the deaths of the children. However, we may not be as familiar with the effects of less dramatic exposures to low levels of pesticides which include increased risks of cancer, neurologic/developmental injury, birth defects, reproductive effects, and respiratory conditions. Documentation is substantial and increasing that exposures result in significant impairments including those characterized as endocrine disruption and epigenomic changes which may have implications for future generations.

The use of pesticides in schools is recognized as a serious source of environmental exposure for children in Indiana and in other states. Published EPA reports from 1998 and 1999 documented:

- Connecticut schools reported 87% of 77 school districts surveyed sprayed pesticides indoors. Pesticides reportedly applied indoors include organophosphate and carbamate insecticides that may adversely affect the human nervous system via cholinesterase inhibition.
- Washington schools reported 88% of 33 school districts surveyed use one or more pesticides that can cause cancer, or damage the nervous system, hormone system or reproductive system.
- California schools reported 93% of 46 school districts surveyed use pesticides, 87% reported using one or more of 27 hazardous pesticides that can cause cancer, affect the reproductive system, mimic the hormone system or act as a nerve toxin.

Health effects of 48 pesticides commonly used in schools are reported to be as follows: 22 are probable or possible carcinogens, 26 have been shown to cause reproductive effects, 31 damage the nervous system, 31 injure the liver or kidney, 41 are sensitizers or irritants, and 16 can cause birth defects.

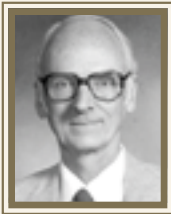
Indiana is nationally recognized for the sequelae of a case in 1997 in Monroe County of a young boy's recurrent illness determined to be caused by pesticide spraying in his elementary school. His community became one of the first in the nation to adopt an Integrated Pest Management strategy, using pesticides as a last resort. Eliminating attractive nuisances such as food and shelter and denying access to insect and rodent pests resulted in a 92% reduction in pesticide use and a decrease in expenses. A similar program was recently implemented in Pike

Township Schools in Marion County as a model for other Indiana schools. A hands-on educational program for school personnel from around the state at Pike last fall was well received and attracted visitors from other states.

Schools around the nation may be similarly engaged in the future if they pursue the goals U.S. Environmental Protection Agency unveiled in January. The EPA recommends that all public schools adopt Integrated Pest Management practices by 2015, which should result in substantial reduction in pesticide use and exposure. The EPA has also been asked to review current standards for acceptable pesticide exposure for children and pregnant women. History suggests that the more we know about toxic exposures, the lower the levels deemed “acceptable.”

As an alternative to a mandatory state policy for safe pesticide use in Indiana schools, response to these risks has resulted in a voluntary program nominally adopted by about 85% of Indiana's school corporations. The Indiana Pesticide Review Board, charged with developing policy and regulations for the state, developed a Model Pest Control in Indiana Schools Policy in 2001. The policy outlines appropriate use of pesticides overseen by certified individuals when neither children nor staff are present, notification of interested parents and staff when pesticides are applied, and maintenance of proper records regarding pesticide use. Indiana has no current documentation showing whether school districts are complying with these guidelines. Between 2004 and 2006, 129 schools in the 375 Indiana school districts were surveyed by the Office of the Indiana State Chemist (OISC) with a number increasing from the first year's 16 of 40 reporting to have adopted *and* implemented some type of IPM Policy. The Indiana Pesticide Review Board is currently reviewing the Policy and its implementation in Indiana schools. In view of the serious nature of this exposure and the obligation we have to our youngest and future Hoosiers, timely and scientific modernization of pest management in our schools should not be based on an unmonitored voluntary guideline.

You can encourage your local schools to adopt Integrated Pest Management. Expert consultation to schools is available through a unique local nonprofit organization, IKE, Improving Kids' Environment (www.ikecoalition.org) which helped sponsor the Pike demonstration project. (Disclaimer: I am a board member of IKE.) Dr. Marc Lame, entomologist and Professor at Indiana University's School of Public and Environmental Affairs in Bloomington, is a board member and national expert on IPM. Dr. Lame energized this project and others around the nation and is available to talk to physicians and other interested groups.



Kenneth R. Woolling, MD,

Pearl Harbor Day: An I.U. Medical School Student's Memories from December 7, 1941

Reading the article in *The Indianapolis Star*, dated Monday, December 7, 2009, on Pearl Harbor Day brought back many memories.

On that Sunday in 1941, I was a sophomore student at Indiana University School of Medicine in Indianapolis. Our first year of medical school had been in Bloomington, where the parent Indiana University was located; the next three years of training were held in Indianapolis. This arrangement was necessary because the population of Bloomington was too small to supply an adequate number of patients for clinical instruction.

I can still vividly remember that early Sunday morning when it was announced on the radio that swarms of Japanese carrier-based bombers had attacked our naval base at Pearl Harbor in Hawaii. All of us were stunned to learn that our entire Pacific fleet had been devastated by this single aggressive act. Four U.S. battleships, including the USS Arizona and USS Utah, docked there, had been bombed and sunk, and more than 100 U.S. planes destroyed. In addition to the devastation of the base itself, thousands of American lives had been lost. I recall listening to President Franklin D. Roosevelt's famous address to the nation, in which he stated, "This day will live in infamy!" In response to this massive military raid, the United States was suddenly at war.

Within the next few days, all medical students were drafted into the U.S. Army. Those in Indianapolis reported to Fort Benjamin Harrison, just northeast of the city, where we were commissioned as 1st Lieutenants in the medical corps (1st Lt., MC, AUS). We were immediately transferred (on "detached service") to the medical school in Indianapolis for completion of our studies. No one knew how long the war would last. The government had decided, however, that, "for the duration" of hostilities, a steady supply of physicians would be needed to care for the sick and wounded as well to institute preventive measures.

Formerly, to graduate from medical school required four years of study. Every year, two semesters of four and a half months each were followed by a three-month summer vacation. Now, the summer vacations were eliminated. One term of nine months of study was immediately followed by another nine-month term, with no interruption (the so-called "9-9-9" program). After completion of the "9-9-9" program, I received my M.D. degree in August, 1943, at the graduation ceremony held in Bloomington. Thereafter, all the members of

my graduating class were required to serve a one-year internship. This I served at Indianapolis City Hospital (now Wishard Memorial Hospital).

Immediately following this, prior to overseas assignments, all members of our class were called to active duty at Carlisle Barracks, Pennsylvania, Medical Field Service School (MFSS), for intensive training in military field activity. The training lasted six weeks. During this time, we learned such skills as crawling face down across a field where live bullets were being fired just 12 inches above the ground; next, with full pack on our backs, climbing a wooden scaffolding some 70 feet high, and then descending on a network of rope ladders. Also with full pack on our backs, we were required to ascend and descend quickly an especially steep rise, aptly named "coronary hill." These grueling exercises separated the men from the boys! This training proved to be life-saving later on when, off the coast of Normandy, France, we were required to de-bark from our troopship by rope ladder to the LCAT (landing craft army transport) waiting far below.

On completion of our preparation at Carlisle Barracks, we were "shipped out" with the 250th General Hospital to Fort Lewis, state of Washington, for parallel training with the 251st and 252nd General Hospitals at Madigan General Hospital near Tacoma. En route, we travelled by plane – a plane with no seats. We sat on an unpadded floor, leaning against our backpacks.

At Fort Lewis, we were being prepared to be sent to the Pacific Theater of Operations ("P.T.O."). However, on December 16, 1944, our plans were abruptly changed by the occurrence of the "Battle of the Bulge," in the European Theater of Operations ("E.T.O."). In response to this bloody battle, we were immediately flown back to the east coast and then deployed to France.

The Battle of the Bulge took place in Belgium's Ardennes Forest and involved more than 500,000 Americans, some 19,000 of whom lost their lives. Later, in the eastern theater, the subsequent triumphant return of General Douglas MacArthur to Manila, and, ultimately, Japan's surrender after the first atomic bomb was dropped on Hiroshima and the second on Nagasaki, is well-known history.

Pearl Harbor Day, December 7, 2009 – 68 years after the fact – sends my thoughts down memory lane.

IMS

The things we do for *financial savvy.*



WEALTH MANAGEMENT

We know that the complexities of the financial world can sometimes be a little overwhelming. That's why we provide you with dedicated investment professionals. Meet Brian Weaver, a Wealth Management Advisor at Fifth Third Private Bank. With more than 15 years of industry experience, Brian helps clients to develop a simplified financial plan that's both easy to manage and easy to understand. Put his trusted guidance to work for you. Call 317-383-2259 to arrange a consultation today.

Brian Weaver
Wealth Management Advisor
Brian.Weaver@53.com
317-383-2259



The things we do for dreams.™

Fifth Third Private Bank is a division of Fifth Third Bank offering banking, investment, and insurance products and services. Fifth Third Bancorp provides access to investments and investment services through various subsidiaries, including Fifth Third Securities. Fifth Third Securities is the trade name used by Fifth Third Securities, Inc., member FINRA/SIPC, a registered broker-dealer and registered investment advisor. Investments and Investment Services:

Are Not FDIC Insured	Offer No Bank Guarantee	May Lose Value
Are Not Insured By Any Federal Government Agency		Are Not A Deposit

Insurance products made available through Fifth Third Insurance Agency, Inc.



*Ed J. Kowlowitz, MD; John J. Fitzgerald, MD; Jocelyn L. Bush, MD; Karen A. Schloemer, MD
Board-Certified Pain Management Specialists*

Visit IndyPain.com to learn more about our newest physician - Jocelyn L. Bush!

We get your patients back to life.

The Center for Pain Management is one of Central Indiana's most experienced medical practices focusing exclusively on treating patients who suffer from back, head, neck, joint or cancer-related pain.

This includes:

- Acute injuries or treatment
- Spinal injuries
- Herniated discs
- Arthritis
- Failed back surgery
- Chronic pain
- Migraines
- Fibromyalgia

Our team of clinicians and board-certified physicians specializes in comprehensive evidence-based diagnostic and multi-disciplinary treatment modalities that include:

- Interventional procedures
- Physical therapy
- Medication management
- Spinal cord stimulation
- Psychological counseling

Physician referrals and patient self-referrals are accepted.



317.706.PAIN

317.706.7246

www.IndyPain.com

8805 N. Meridian St.
Indianapolis, IN 46260

Bulletin Board

Gregory N. Larkin, MD, IMS Past President was named Indiana State Board of Health Commissioner by Governor Mitch Daniels March 3, 2010. Dr. Larkin most recently was chief medical officer for the Indiana Health Exchange. A South Bend native, Dr. Larkin has worked as a family physician in Greencastle, worked for Eli Lilly and Company for 22 years in charge of five clinics as well as the domestic employee and retiree health plan.

In addition to his leadership as IMS President, Dr. Larkin has served on committees, as Secretary/Treasurer, Vice-Chair and Chair of the Board of Directors and as an Alternate and Delegate to ISMA. He continues to serve on the IMS Board of Directors.

Cancer physician and researcher **Patrick J. Loehrer, Sr., MD**, has been named director of the Indiana University Melvin and Bren Simon Cancer Center.

Dr. Loehrer also will serve as associate dean for cancer research and hold the title HH Gregg Professor of Oncology, pending approval by the board of trustees, at the Indiana University School of Medicine.

Dr. Loehrer, who joined the IU faculty in 1990, most recently was the Kenneth Wiseman Professor of Medicine and the director of the Division of Hematology-Oncology for the IU School of Medicine. He was associate director of clinical research at the medical school from 2002 to 2006 and deputy director of the IU Simon Cancer Center from 2006 to 2009.

James A. Trippi, MD, cardiologist with The Care Group, has earned board certification in Clinical Lipidology by the American Board of Clinical Lipidology, an independent certifying organization.

Rick C. Sasso, MD, Indiana Spine Group, was the invited guest professor at the University of Wisconsin, Department of Orthopaedic surgery, Spine surgery Fellowship Reunion, held February 3-6, 2010 in Big Sky, Montana. He was the senior author of two articles in the February *Journal of Spinal Disorders and Techniques*, one entitled "Clinical Outcomes of Bryan Cervical Disc Arthroplasty: A Prospective, Randomized, Controlled, Single Site Trial with 48-Month Follow Up" and a manuscript detailing the results of the largest series of anterior cervical discectomy and fusion performed on an outpatient basis reported in the literature.

Tod C. Huntley, MD, Center for Ear Nose Throat & Allergy, has just received Institutional Review Board approval for an FDA clinical study of an implantable hypoglossal nerve stimulator for obstructive sleep apnea. Dr. Huntley is principal investigator for this multi-center US trial. Dr. Huntley may be contacted at thuntley@centadocs.com for study and patient enrollment criteria details.

Richard C. Rink, MD, Chief of Pediatric Urology at Riley Hospital for children and Pediatric Urologist at the Peyton Manning children's Hospital was an invited speaker on October 14, 2009 for the Third International Symposium on Exstrophy and Epispadias in Baltimore, Maryland. He also was one of the international speakers invited to teach at the Lawson Wilkins Pediatric Endocrinology Society/European Society of Pediatric Summer School which was held this year in New York City where he discuss "Reconstruction of Children Born with Disorder of Sexual Development."

Richard D. Feldman, MD, practicing physician and former state health commissioner participated in a teleconference



Richard D. Feldman, MD



Marc W. Gerdisch, MD



Jeffrey A. Greenberg, MD



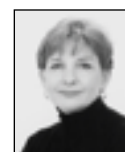
Tod C. Huntley, MD



Gregory N. Larkin, MD



Patrick J. Loehrer, Sr., MD



Eve L. Olson, MD



Richard C. Rink, MD



Rick C. Sasso, MD



Nalin M. Shah, MD



James A. Trippi, MD

February 11, 2010 in Indianapolis in opposition of the federal "Dirty Air Act."

Jeffrey A. Greenberg, MD, attended the ASSH 2010 Electives in Hand Surgery Course in New Orleans, February 5-6, 2010, where he presented a lecture entitled "Surgical Management of Rotator Cuff Injuries" and was the Moderator for Course 3 – Ulnar Sided Wrist Pain. He was the Chairman for the Stryker Hand and Upper Extremity Dissection Course held at the South Florida Learning Center in Fort Lauderdale, FL, February 26-27, 2010, he presented the following lectures at the Stryker meeting also: "PIP Fracture Dislocations," "Soft Tissue Coverage of the Upper Extremity," and "Distal Radius ORIF – Dorsal and Fragment Specific Indications."

News from St. Francis ...

Eve L. Olson, MD, and **Nalin M. Shah, MD**, have been selected as Distinguished Service Award winners by the Medical Executive Committee at St. Francis Hospital & Health Centers. The two recently were recognized at a St. Francis physicians program and dinner in downtown Indianapolis. Olson and Shah are past presidents of the St. Francis medical staff and have served on numerous hospital committees.

A member of St. Francis Medical Group, Dr. Olson is medical director of the hospital's Weight Loss Center. She joined St. Francis as an emergency physician in 1984. She later sought intensive training in bariatric medicine and is now board-certified in that field. In 2003, Olson began treating obese patients at St. Francis in the state's first comprehensive bariatrics center, which combined both medical and surgical treatments. Olson earned her medical degree at the Indiana University School of Medicine and completed her residency and internship in emergency medicine at Methodist Hospital.

Shah has been affiliated with St. Francis since 1974 and has served as president of Southeast Anesthesiologists since 1993. He was St. Francis' medical director of anesthesia from 1993 to 2007.

Marc W. Gerdisch, MD, presented a program at the Mooresville Public Library, February 23, 2010, which explained how heart valves cause murmurs and when it's time to seek treatment. The event was free to the public. Dr. Gerdisch is the medical director of cardiothoracic surgery at the St. Francis Heart Center, a partner of Cardiac Surgery Associates and the co-director of the St. Francis Heart Valve Center at St. Francis Hospital & Health Centers.

IMS

High-Quality Investments.
Customized Portfolios.


DIAMOND
CAPITAL MANAGEMENT

Proven Expertise. Uncommon Service.

317-261-1900

Not FDIC Insured | No Bank Guarantee | May Lose Value | Diamond Capital Management is a registered trademark. © 2008 Diamond Capital Management



Seated Left to Right
Morgan E. Tharp II, M.D.
Keith W. Logie, M.D.
Andrew R. Greenspan, M.D.
Magazal S. Mumli, M.D.

1st Row Standing
Madelaine M. Sgroi, D.O.
Danielle M. Doyle, M.D.
G. Irene Minor, M.D.
Hillary H. Wu, M.D., Ph.D.
Melody Sonds, RN, CS, MSN
Jennifer K. Morgan, M.D.

Back Row
Bryce C. Lord, D.O.
Paul M. DesRosiers M.S., M.D.
Serd Begonovic, M.D., Ph.D.
Thomas L. Whittaker, M.D.
Elsayed Aly, M.D.
Harold O. Longo, M.D.

COMPREHENSIVE INTEGRATED CANCER CARE

MEDICAL ONCOLOGY/ HEMATOLOGY
RADIATION ONCOLOGY

FOR MORE THAN 30 YEARS.



CENTRAL INDIANA
CANCER CENTERS

 United in Healing with US Oncology

www.IndianaCancer.com

Central Scheduling

Local: 317-356-CICC (2422) • Toll Free: 866-791-CICC (2422)

In Memoriam



Louis William Nie, MD
1916 - 2010

Louis William Nie, MD, a long time resident of Indianapolis and recently of Four Seasons Retirement Community in Columbus, died on Friday, February 12, 2010, at the Hospice of South Central Indiana inpatient facility.

He was born on September 1, 1916, in Huntington, Indiana to the late Dr. and Mrs. Grover M. Nie. Dr. Nie was a 1937 graduate of Indiana University, where he was a member of Kappa Sigma Fraternity. He received his medical degree from the Indiana University School of Medicine in 1939. Dr. Nie interned at General Hospital, the US Army and IU Medical Center.

From 1942 to 1946, he served as a Captain in the U.S. Army. Dr. Nie was a neuropsychiatrist in private practice in Indianapolis for 46 years before retiring in 1992. He was a former member of the faculty in the Department of Psychiatry at the Indiana University School of Medicine and a former examiner with the American Board of Psychiatry. He was also a Life Fellow of the American Psychiatric Association, a member of the Indiana Psychiatric Society, a former Board Member of the Indiana State Medical Association and served as President of the Methodist Hospital Medical Staff. Dr. Nie served as a Delegate to the ISMA State Convention 1966-1969.

IMS



Michael Allen Clark, MD
1946 - 2010

Michael Allen Clark, MD, Franklin, Indiana died Friday, February 26, 2010 at St. Francis Hospital in Beech Grove, Indiana. He was 63. Dr. Clark was born September 10, 1946 in Columbus, Ohio.

Dr. Clark received his Bachelor of Science degree in 1968 at the Ohio State University. He then went on to earn a PhD in anatomy in 1971 and his MD in 1976 all from Ohio State University.

Dr. Clark served in the Medical Corps of the United States Navy for 16 years, earning the rank of Commander. During his years in the service, he worked at both Bethesda Naval Hospital and the Armed Forces Institute of Pathology. After serving in the Navy, Dr. Clark continued his career in forensic pathology and worked at Indiana University Medical School as Professor of Pathology.

Dr. Clark was a member of several medical organizations, including the American Medical Association, the American Academy of Forensic Science, and the College of American Pathologists. Dr. Clark's expertise in forensic pathology was highlighted when he appeared on the television show "Forensic Files." He was also an avid antique radio collector and very involved in the Indiana Historical Radio Society.

IMS

TAKE ADVANTAGE OF YOUR MEMBERSHIP

The group purchasing power of the ISMA can help satisfy your insurance needs - at a price you can afford.

Call the ISMA Insurance Agency at (317) 471-4229 or (877) 647-2242.

THE ISMA INSURANCE AGENCY

offers the following insurance programs exclusively for ISMA members:

Health - PPO & Traditional plans from \$250 to \$5,000 deductibles	Voluntary Employee Benefit Plan Dental, short term disability, term life, universal life, cancer plan, Section 125 Premium Only Plan (P.O.P.)	Term Life
Health Savings Account Plan		Disability
Medicare Carve-out		Umbrella Liability
Dental	Auto	Business Owners Policy
Long Term Care	Homeowners	Worker's Compensation
		Malpractice Liability*

These insurance plans have been specifically designed for ISMA members and their employees to provide the highest quality coverage at the lowest possible cost.



* Access is available through Medical Assurance of Indiana - ISMA's endorsed professional liability carrier.

Essential IT coverage.

Get all your supplies from StaplesLink.com®

ThriveProtect Essentials helps businesses with:

- Anti-virus
- Anti-spyware
- Automated patching
- Remote remediation of server and desktop issues

Finally, there's a flexible, cost-effective IT solution geared specifically for smaller businesses. It's called ThriveProtect Essentials, and it features an easy pay-as-you-go plan sure to fit into any business budget.

With the Staples Advantage® program, the benefits are clear: unbelievable low pricing, easy ordering, free next-day delivery, world-class Customer Service, and an Account manager who is dedicated to looking for additional cost saving opportunities and providing practical help whenever you need it.

StaplesLink.com, a complimentary IMS Members Benefit

Please complete this form and fax to **248-465-1527** or email the information requested to Account Manager Kenneth Caeti at **kenneth.caeti@staples.com**.

PLEASE PRINT LEGIBLY IN BLACK INK ONLY

Date: _____

First Name: _____ Last Name: _____ Phone: _____

Fax: _____ Email Address: _____

(Email address required for StaplesLink.com® ordering)

Shipping Location Name: _____

Shipping Address: _____ *(if more than one location please attach list)*

City, State, Zip: _____

Billing Address same? If not: _____

You will receive your individual user ID and password by email within 72 hours.





Project Health

Carrie Jackson Logsdon, Director

Thank you, David V. Poer, MD



David V. Poer, MD, is Project Health's doctor of the month. Originally from Anderson, he was the son of a GM executive so they spent some time in Michigan as well. He says he knew in high school that he wanted to be a physician. His uncle and role model, Dr. Jim Garrison, was a family practitioner in Cumberland. Spending a lot of time with his cousin, Dr. Poer watched his uncle practice medicine and admired his dedication, skill and love for people. He noted with inspiration how his uncle often would arise three times a night to go to the nursing home. "He delivered babies, assisted in surgery, and did everything. About a third of his patients couldn't afford anything so he would take chickens, shoveling of the driveway, etc. as payment. With government health care that all ended; we seem to have an entitlement woven into our national psyche."

Dr. Poer's sister is trained in special education and has home schooled eight children in Ohio. He has a brother in Michigan who is a prosecutor, and a brother here who is an entrepreneur.

Dr. Poer attended the University of Michigan Medical School; did his internship at Bronson Methodist Hospital in Kalamazoo, Michigan and his residency at Indiana University Medical Center. He credits Merrill Grayson, MD, with giving him the opportunity to complete a fellowship at Doctors Hospital at the University of Arkansas Medical Center in vitro-retinal surgery.

Between his residency and fellowship, Dr. Poer served in the Navy as Chief of Ophthalmology at the Naval Medical Center in Okinawa, Japan. He was the only retinal specialist there. "With 65,000 military and dependents in Okinawa it was tough, so I got together on the phone with a guy in Philippines and shared problems and issues." It taught him to be independent, and go to the books for resources. "I was

the only ophthalmologist there so it was a maturing time of life." He says he enjoyed the military, the environment and bright people who were always paying attention to the world around them, because everybody would be stationed somewhere else in a few years.

Dr. Poer says he likes volunteering for Project Health because it is an organization that already screens people. These are people who are trying to provide for themselves. "There are times in my life that have been that way." Project Health, he says, already has the connections to make it more efficient for patients and physicians, and the interpreters are fantastic. "I can trust Project Health to do it right."

He has gone on a couple of mission trips, but "I found that I can't really use my retina skills on missions. Cataract surgery lends itself well, and I fixed eye muffles for a week, but didn't use my retina skills." Project Health is his domestic mission.

He has three grown children and one stepdaughter – none in medicine. "My daughter worked for me for a while, learned how to handle people and a business. I encourage my children to give to charity. At the end of life, one is measured not in dollars and cents but what you've done."

His hobbies include bicycling, canoeing and hiking with his wife and just being outdoors. They have a small farm and recently took 58 cows to market. They also have "chickens, goats and donkeys that don't do anything." "I grew up in the suburbs, and my career choices were medicine, outdoor guide, or park ranger. I figured that being a physician would let me do those other things on the side. It keeps you grounded and the pride level down." He ends up giving some of the beef away to relatives and friends and just gave away a side of beef for his daughter's school auction. Project Health is glad Dr. Poer and 1,000 other physicians are such giving people – and so are our patients! Thank you!

IMS

Yes! I want to Help Project Health

Enclosed is My 100% Tax-Deductible Contribution:

Check (payable to Indianapolis Medical Society Foundation) Credit Card (Visa or MasterCard)

One-time Only: \$100 \$200 \$500 \$ _____

Monthly: \$25/mo. \$50/mo. \$ _____

Name: _____

Address: _____

City: _____ State: _____ Zip: _____

Phone: _____ Fax: _____

Email: _____ Contribution Honors: _____

Credit Card: _____ Expiration Date: _____ Security Code: _____

Indianapolis Medical Society Foundation • 631 E. New York St., Indianapolis, IN 46202-3706
Phone: 317-639-3406 Fax: (317) 262-5609 www.imsonline.org ims@imsonline.org



Happy Birthday

IMS Members

April 1st

Charles J. Van Tassel, Jr., MD
Lucia M. Spears, MD
Henry Feuer, MD
Thomas A. Stump, MD
Sofy Y. Sendoya, MD
Paul A. Schneider, MD
John A. Botkin, MD
Scott T. Miles, MD
Peter A. Walts, MD

April 2nd

Randall W. Strate, MD
Paul Gerdes Schoon, MD
Ryan D. Nagy, MD
Timothy J. Ellender, MD
Thomas A. Ambrose II, MD
Michael A. Robertson, MD
Sandy J. Porter, MD
Jane Howard, MD
Michael H. Levine, MD

April 3rd

Vicki M. Roe, MD
Richard E. Lindseth, MD
Greg A. Merrell, MD
Sagar P. Shah, MD

April 4th

Michael R. Burt, MD
R. Barry Melbert, MD
Richard Payne, MD

April 5th

Edward J. Diekhoff, MD
Dale L. McCarter, MD
Steven W. Carr, MD
Hans E. Geisler, MD
Eric S. Leaming, MD
Laura O. Dugan, MD
Linda A. Huck, MD
Robert E. Mehl, Jr., MD
Ronda A. Hamaker, MD
Ankur Patel, MD
Deborah A. Ronco, MD

April 6th

Doris Hardacker, MD
Laryn A. Peterson, MD
Roger R. Lenke, MD
John G. Pantzer, Jr., MD
David A. Glander, MD
Maurice E. Rougraff, MD
Mark H. Fox, MD
Daniel G. Spomar, MD

April 7th

Scott W. Curnow, MD
Edmund Gomez, MD
Robert C. Gregori, MD
David L. Powers, MD
Louis D. Bojrab, MD
John K. Schneider, MD
Ramarao Yeleti, MD
Timothy L. Hobbs, MD
William J. Berg, MD

April 8th

Colleen M. Madden, MD
Ellen A. Seiffert, MD
Mary Pell Abernathy, MD
Patrick E. Matoole, MD
William W. Thompson, MD
James J. Szwed, MD
Richard B. Kohler, MD

April 9th

R. Jeffrey Price, MD
Brian D. Clarke, MD

April 10th

Caryn M. Vogel, MD
Sheila M. Gamache, MD
Bruce W. Nugent, MD
Noel L. Jansen, MD
Asoka S. Ratnayake, MD
John T. Cummings, Jr., MD
Michael S. Turner, MD
Haroon M. Qazi, MD
Daniel M. Maxfield, MD
James A. Trippi, MD
Fred Sanders, MD

April 11th

Timothy B. O'Donnell, MD

April 12th

Bruce W. Van Natta, MD
Jeffrey A. Wheeler, MD
Thomas H. Fairchild, MD
James Bicos, MD
John C. Ellis, MD
Donald M. Schlegel, MD

April 13th

Patrick L. Foley, MD
Richard A. Steele, Jr., MD

April 14th

James M. Lawrence, MD
Charles C. Mulry, MD
Mitchell A. Russ, MD
Vincent B. Ostrowski, MD
Michael L. Bogan, MD
Jack Farr, MD
Herbert M. Biel, MD
Thomas A. Brady, MD

April 15th

M. Rashid A. Khairi, MD
Thomas L. Hutchinson, MD
Jason E. Rieser, MD
Winston R. Nara, MD
Jennifer W. Bigelow, MD
Ana Priscu, MD
Anastacio C. Ng, MD
Michael W. Myers, MD

April 16th

Wally Zollman, MD
Judith Ann Dunipace, MD
Linda F. Martin, MD
Frank B. Throop, MD
Walter B. Tinsley, Jr., MD
Richard W. Campbell, MD
Dolores G. Adeva, MD, C.P.H.
James F. Leland, MD

April 17th

Marvin E. Melton, MD
Charles R. Thomas, MD
Christopher Cuevas, MD

April 18th

Kathryn M. Peck, MD
Brian J. Williams, MD
Patricia G. Huse, MD

April 19th

Merrill Grayson, MD
R. Louis Curry, MD
Thomas T. Tigges, MD
Jon R. Simala, MD

April 20th

Howard M. Luginbill, MD
Sandeep A. Joshi, MD
Brian K. Stansfield, MD
Ann T. Moriarty, MD
James M. Donahue, MD
George A. DeSilvester, MD
Jerome D. Barnes, MD
Robert W. Brandt, MD

April 21st

Evelyn W. White, MD
Eve M. Gill, MD
Richard F. Graffis, MD
Ramon G. Halum III, MD
Homer Ferguson Beltz, MD
Homayoon Shidnia, MD
Scott C. Pike, MD
Kevin J. Stanley, MD

April 22nd

Theodore A. Nukes, MD
Timothy Joseph Kelly, MD
Jose N. Tord, MD

April 23rd

David D. Williams, MD
Timothy J. Broach, MD
Jeffrey L. Christie, MD
Steven Maurice Clark, MD
Samuel M. Hazlett III, MD
John E. Krol, MD

April 24th

Jeanette E. McDonald, MD
Charles D. Hodges, Jr., MD
Kent B. Remley, MD
Thomas M. Rouse, MD

April 25th

Thomas W. Emmett, MD
John C. Ramsey, MD
Eric Y. Knoll, MD
Craig E. Herrman, MD
Jerry H. Fletcher, MD
Eric A. Monesmith, MD
James C. Elliott, MD
Rod A. Nisi, MD
Robert E. Gerth, MD
John P. Breinholt, MD
Andrew D. Nigh, MD

April 26th

Jodi L. Smith, MD
Mary R. Rouse, MD
Rachel A. Shockley, DO
John F. Wagner, MD
Leon A. Mencias, Jr., MD
George E. McCord, MD
Roy S. Harper, MD

April 27th

Robert S. Flint, MD, PhD
Norman Mindrebo, MD
Don R. DuBois, MD
Melinda S. Mumford, MD

April 28th

Indy Lane, MD
Ibad U. Ansari, MD
James L. Walters, MD
Ronald L. Young II, MD
Susan J. F. Meyer, MD
Michaela A. Besold, MD

April 29th

Mary A. Margolis, MD

April 30th

Edward J. Hellman, MD
Hua Meng, MD
Vicki K. Shelton, MD
David E. Crook, MD
Woodrow A. Corey, MD



Indianapolis Medical Society

631 East New York Street • Indianapolis, IN 46202-3706

Phone: (317) 639-3406 • Fax: (317) 262-5609 • E-Mail: ims@imsonline.org • Web: www.imsonline.org

Officers 2009-2010

John C. Ellis President
John P. McGoff Immediate Past President

Jeffrey J. Kellams..... President-Elect
Mark M. Hamilton..... Secretary/Treasurer

Board of Directors 2009-2010

Terms End December 1 of Year in Parentheses

Richard H. Rhodes (2010) Chair, Bruce M. Goens (2011) Vice-Chair

Linda Feiwell Abels (2010)
Richard D. Feldman (2010)
Alan R. Gillespie (2010)
Ted W. Grisell (2010)
Stephen R. Klapper (2010)
Thomas E. McSoley (2010)
J. Mark Michael (2010)
Barbara K. Siwy (2010)
Michael T. Stack (2010)
John J. Wernert (2010)

Christopher D. Bojrab (2011)
David R. Diaz (2011)
Marc E. Duerden (2011)
Bernard J. Emkes (2011)
Paula A. Hall (2011)
Gerald T. Keener, Jr. (2011)
John E. Krol (2011)
Gregory N. Larkin (2011)
Susan K. Maisel (2011)
John F. Schaefer, Jr. (2011)

Mary D. Bush (2012)
Heidi M. Dunniway (2012)
Robert J. Goulet, Jr. (2012)
David C. Hall (2012)
Marc R. Kappelman (2012)
Jon D. Marhenke (2012)*
Anthony W. Mimms (2012)
Stephen W. Perkins (2012)
Bridget M. Sanders (2012)

*Appointed from the President's Advisory Council

Delegates to the State Convention, September 2010, Indianapolis

The year shown in parentheses indicates year in which the term expires following the conclusion of the ISMA Annual Convention.

Thomas A. Broadie (2010)
Marc E. Duerden (2010)
Ted W. Grisell (2010)
David C. Hall (2010)
Ronda A. Hamaker (2010)
James F. Leland (2010)
Frank P. Lloyd (2010)
Susan K. Maisel (2010)
John P. McGoff (2010)
Thomas E. McSoley (2010)
John J. Wernert (2010)

Mary D. Bush (2011)
G. Gregory Clark (2011)
Carolyn A. Cunningham (2011)
David R. Diaz (2011)
Jonathan A. Fisch (2011)
Richard K. Freeman (2011)
Bruce M. Goens (2011)
Hubner Hobbs (2011)
Robert M. Hurwitz (2011)
Paul D. Isenberg (2011)
Marc R. Kappelman (2011)
Alan P. Ladd (2011)
Daniel E. Lehman (2011)
Mary Ian McAteer (2011)
Clement J. McDonald III (2011)
James D. Miner (2011)
Maria C. Poor (2011)
Richard H. Rhodes (2011)

Linda Feiwell Abels (2012)
Christopher D. Bojrab (2012)
Kathy S. Clark (2012)
John C. Ellis (2012)
Alan R. Gillespie (2012)
Robert J. Goulet, Jr. (2012)
C. William Hanke (2012)
Gerald T. Keener, Jr. (2012)
David H. Moore (2012)
Robert Michael Pearce (2012)
J. Scott Pittman (2012)
Bridget M. Sanders (2012)
John F. Schaefer, Jr. (2012)
Tim E. Taber (2012)
H. Jeffery Whitaker (2012)

Alternate Delegates to the State Convention, September 2010, Indianapolis

The year shown in parentheses indicates year in which the term expires following the conclusion of the ISMA Annual Convention.

F. Keith Bean (2010)
Benjamin J. Copeland (2010)
Woodrow A. Corey (2010)
Sheila M. Gamache (2010)
Andrea L. Haller (2010)
Mark M. Hamilton (2010)
Timothy L. Hobbs (2010)
Andrew A. Johnstone (2010)
RoseMarie Jones (2010)
Martin Kaefer (2010)
Jeffrey J. Kellams (2010)
Anthony W. Mimms (2010)
Kimberly K. Short (2010)
Louis L. Winterheimer (2010)
Ronald L. Young, II (2010)

Keenan R. Berghoff, (2011)
Christopher B. Doehring (2011)
Thomas G. Ferry (2011)
Ann Marie Hake (2011)
Robert E. Holt (2011)
Douglas J. Horton (2011)
E. Michael Keating (2011)
Ramana S. Moorthy (2011)
Michelle W. Murphy (2011)
Mercy O. Obeime (2011)
Rudolph Y. Rouhana (2011)
Lynda A. Smirz (2011)
Allison E. Williams (2011)

Nancy R. Baird (2012)
Jennifer J. Bucki (2012)
Stephen R. Dunlop (2012)
John Duplantier (2012)
Robert S. Flint (2012)
Norrissa N. Howard (2012)
Mark U. Kyker (2012)
Terry L. Layman (2012)
Patrick J. Lotti (2012)
Mark R. Ogle (2012)
Terri A. Pellow (2012)
David M. Ratzman (2012)
Jeffrey M. Rothenberg (2012)
Beata E. Samuel (2012)
Steven Richard Smith (2012)
Abideen Yekinni (2012)

Indiana State Medical Association Past Presidents

Jon D. Marhenke 2007-2008
Bernard J. Emkes, 2000-2001
Peter L. Winters, 1997-1998
William H. Beeson, 1992-1993
George H. Rawls, 1989-1990
John D. MacDougall, 1987-1988
George T. Lukemeyer, 1983-1984
Alvin J. Haley, 1980-1981

Indiana State Medical Association

House of Delegate
Vice-Speaker, ISMA
John J. Wernert (2009-2010)

Seventh District Medical Society Trustees

Richard D. Feldman (2010)
Heidi M. Dunniway (2011)
A. Michael Sadove (2012)

Alternate Trustees

John P. McGoff (2010)
Vicki M. Roe (2011)
John C. Ellis (2012)

In Summary

	IMS	ISMA	AMA
PERCENT OF DEDUCTIBLE DUES	100%	77%	50%
PERCENT OF NON-DEDUCTIBLE DUES	0%	23%	50%

Save This Information for Tax Filing

The portion of AMA and ISMA dues used to finance lobbying efforts is not tax-deductible. This is essential information for your tax filings.

For the 2010 ISMA dues year, the portion of deductible dues is 77 percent and the portion of dues attributable to lobbying efforts and not tax-deductible is 23 percent.

For the 2010 AMA dues year, the portion of deductible dues is 50 percent and the portion of dues that are attributable to lobbying and not tax-deductible is 50 percent.

As always, your Indianapolis Medical Society dues are 100% tax deductible.

The Savings Expected. Members Are Seeing...

Indianapolis Medical Society physician practices are benefiting from the new discount IMS has secured through ADVANTAGE Health Solutions. The practices that have enrolled their employees in this program so far have saved, ON AVERAGE, over \$1900/Employee/Year.

Whether the driving issue for you is:

1. Rising group health insurance premiums, or
2. A need to consider an alternative health insurance company, or

3. A combination of these and other issues, then, contact the exclusive brokers for this group insurance offering, Acumen Benefit Solutions, to see if ADVANTAGE is a good fit for your practice. ADVANTAGE Health Solutions is a local health plan owned by local providers. Call Acumen Benefit Solutions at (317) 564-4003.

Get FREE Inside Information on Collections

Do you know the most costly collection mistake you can make? More importantly, do you know how to avoid making it? Learn the answers and much more in a FREE booklet titled **THE IN\$IDE FACT\$: Things Most Collection Agencies Won't Tell You**. The 12-page resource has just been published by I.C. System, the IMS's recommended provider of collection services, and it is available to you as a member-benefit.

THE IN\$IDE FACT\$ features money-saving and money-generating collection-related facts, including:

- How to quickly tell if an agency truly invests in COMPLIANCE

- What to be aware of regarding agency pricing
- Why agencies engage in "forwarding"

To request your **FREE** booklet from I.C. System, please simply:

- * Visit www.icmemberbenefits.com
- * Call 800-279-3511

Want to serve in a Leadership Role in the IMS?

Want **Your** Voice Heard?

Your IMS is accepting Nominations!!

The Indianapolis Medical Society wants you to join the IMS Leadership Team. Make a difference in the professional lives of your colleagues, friends, and family in medicine. Take an active role in the IMS!

Nominations for leadership positions should be submitted to Beverly Hurt, EVP, by calling 639-3406 or email bhurt@imsonline.org.

Indianapolis Medical Alliance IMS Foundation Scholarship

In effort to assist the entire medical community of Indianapolis and the surrounding areas, the IMS Alliance provides scholarships. These scholarships are exclusively for nursing and allied health students who have been accepted into the clinical portion of their specific curriculum. Students submitting fully documented applications will receive interviews in June. Awarded funds will be disbursed for the Fall/Spring Semester, 2010-2011. Applications may be obtained through the university Financial Aid Offices or contact Beverly Hurt, IMS EVP, or Becky Collis at (317) 639-3406.

*May 1st, 2010 is the deadline for Applications, Letters of Reference, and a copy of the most recent Transcript.

The Indianapolis Medical Society Wants Your Email Address & Fax Number!

Today in this fast-paced world, we need to have a fast network to send and receive information. Blast Emails & Blast Faxes are our cost-effective, timely answer for: • News • Meetings • Seminars • Requests • Updates & Viral News. Send your email address (Practice Managers or other contacts as well) for our database to tmccauley@imsonline.org or call 639-3406

CREATE AN IMAGE™
With



Specialists in Healthcare Linen Services

- We will **launder** the linens, uniforms, and professional clothing that you already own.
- We will **rent** and **launder** linens, uniforms, and professional clothing.
- We will **sell** linens, uniforms, and professional clothing.
- We will **rent, sell, and launder** linens, uniforms, and professional clothing in any combination.
- We will **pick up** and **deliver** to your place of business.
- Samples of our products are available for your inspection.
- **We practice universal precaution standards.**
- For a free price quote or further explanation of our services . . . please call:

In Indianapolis: 634-0833 In Muncie: 284-4411

CME & Conferences

Community Hospitals Indianapolis

Community Hospital East

First
Wednesday Critical Care Conference
Medical Staff Conf. Room, 12:00 - 1:00 p.m.

Second
Wednesday Medical Grand Rounds
Medical Staff Conf. Room, 12:00 - 1:00 p.m.

Community Hospital South

Fourth
Thursday Medical Grand Rounds
Conf. Rooms A & B, 7:30 - 8:30 a.m.

Community Hospital North

First
Wednesday Pediatric Grand Rounds
Multi Services Rooms 1, 2 and 3,
7250 Clearvista Dr. 7:30 - 8:30 a.m.

First
Friday North Forum
Reilly Board Room; 12:00 - 1:00 p.m.

The Indiana Heart Hospital

Third
Wednesday Ken Stanley CV Conference
7-8 a.m., rotate between TIHH and CHE
Every month

Day varies
Every other Cath Conference
month 7-8 a.m., TIHH MCV Boardroom

Cancer Conferences 2010

Community Hospital East:

First
Tuesday Cancer Conference East (case presentations)
Medical Staff Conf. Room, 12:00 to 1:00 p.m.

Second
Wednesday Chest Conference (site specific-lung)
Cancer Registry Conf. Room, 7:00 to 8:00 a.m.

Community Hospital North

Third
Wednesday Cancer Conference North (case presentations)
Reilly Board Room, 12:00 - 1:00 p.m.

Third
Friday Breast Conference North (site specific-breast)
Reilly Board Room, 12:00 to 1:00 p.m.

Fourth
Wednesday Chest Conference North (site specific-lung)
Reilly Board Room, 7:00 to 8:00 a.m.

Community Hospital South

First
Wednesday Breast Conference South (site specific-breast)
Center for Women's Health, 8:00 to 9:00 a.m.

Third
Wednesday Cancer Conference South, (case presentations)
President's Board Room, 12:00 to 1:00 p.m.

North Cancer Pavilion

Third
Wednesday Melanoma & Cutaneous Skin Cancer Tumor Conf.
Pavilion Conf. Room, 7:30 to 8:30 a.m.

For more information, contact Valerie Brown, (317) 355-5381.

Cardiovascular Research and Education Foundation of Indiana, Inc.

2010 CME Symposiums

Friday, May 21, 2010 Emergency Medicine Symposium
(Marriott North/Keystone Crossing)

Friday, October 8, 2010 Arrhythmia &
Heart Failure Symposium
(Marriott North/Keystone Crossing)

Friday, December 3, 2010 Update in Cardiology
(Marriott North, Keystone Crossing)

Please contact Suzanne Brown at 317-338-6211 or visit
CardioFoundation.org or TheCareGroup.com for details.

Clarian Health Partners

IU - Methodist - Riley

April 6-7 A Healthier America, One Community at a Time/
Indiana Joint National Public Health Week Conf.
IUPUI Campus Center, Indianapolis, Indiana

April 10 State of the Art Cancer Care: An IU Melvin &
Bren Simon Cancer Center Education Program
University Place Conference Center
Indianapolis, Indiana

April 10 The First Annual Eugene & Marilyn Glick Vision
and Research Symposium
IU Simon Cancer Research III Auditorium
Indianapolis, Indiana

April 24 Practical Pearls for General &
Community Pediatrics 2010
Riley Outpatient Center, Indianapolis, Indiana

April 24 Annual Meeting of the Indiana Society of
Anesthesiologists and Anesthesia Update
IUPUI Campus Center, Indianapolis, Indiana

May 14 Thirty-Sixth Annual Wishard Memorial Lecture
University Place Conference Center
Indianapolis, Indiana

May 14 13th Annual IU Gastroenterology/Hepatology Update
Indiana History Center, Indianapolis, Indiana

May 19-20 45th Annual Riley Hospital for Children
Pediatric Conference
Crowne Plaza Hotel, Indianapolis, Indiana

May 22 IUSM Alumni Weekend CME Program:
New Developments in Alzheimer's Disease &
Electronic Health Records
University Place Conference Center
Indianapolis, Indiana

Course dates and locations are subject to change. For more
information, please visit <http://cme.medicine.iu.edu> or call 317-
274-0104.

The Indiana University School of Medicine is accredited by the
ACCME to provide continuing medical education for physicians.

We have more than 100 recurring meetings available. For a list-
ing or more information, please visit <http://cme.medicine.iu.edu>
or call 317-274-0104.

Indiana Psychiatric Society

2010 Integrative Mental Health Conference

April 23 & 24, 2010
West Baden Springs Hotel - Accredited for 8.0 CME

The American Psychiatric Association in joint sponsorship with
IPS & The Kentucky Psychiatric Medical Association invite you to
attend this conference at the exclusive West Baden Springs Hotel!
This event is designed to address professional practice gaps and
advance the physicians' competence and effective use of targeted
skills. The morning session will explore the relationship of sleep
and health. Experts in sleep medicine, psychiatry, pulmonology
and sleep pharmacology will present a program of lectures and
case scenarios to improve your understanding of sleep disorders.
The afternoon session will focus on women's health issues. Topics
will include common psychiatric disorders in women with comorbid
medical conditions, the impact of trauma on women's health, and
a review of the rational use of hormonal and nutritional therapies
in addressing women's health issues. Early bird registration and
discounted hotel room rates available thru 4/4.

Event brochure and registration details at www.pdallc.com.
Questions call Sara at 888-477-9119.

CME & Conferences

St. Vincent Hospital and Health Care Center Inc.

- April 14 Center for Perinatal Loss presents:
A Holistic Approach to Care Giving
5.5 Credits
The Marten House
Register at 338-CARE
- April 17 Current Issues in the Management of Bone and
Soft Tissue Tumors
2.75 Credits
St. Vincent Hospital - Cooling Auditorium
Call Stephanie Rumble for more information, 275-8004
- April 28 Aortic Stenosis in 2010: New Paradigms for Surgical,
Percutaneous, and Medical Therapies
in Elderly Patients
1.5 Credits
Renaissance Indianapolis North Hotel
RSVP at 866-788-3627
- May 24 Finding Peace Amidst Medicine's Perfect Storm
6.25 Credits
Seton Cove
Register at 338-CARE
- Sept. 10-11
Back Talk: Comprehensive Concepts in Spinal
Disorders and Abnormalities
11.0 Credits
The Westin Indianapolis
Registration starts soon

St. Francis Hospital & Health Centers

- Colon & Rectal Journal Club, Thursday, April 1**
This is part of the curriculum of our Colon Rectal Surgery
Residency Program and will be held every other month at rotating
locations of St. Francis Indianapolis & Mooresville. The next
session will be Thursday, April 1 at 6 p.m., St. Francis Mooresville,
1201 Hadley Road, Mooresville, Indiana.
- St. Francis Hospital & Health Centers is accredited by the
Indiana State Medical Association to sponsor continuing medical
education. St. Francis Hospital & Health Centers Medical
Education Department designates this educational activity for 1
AMA PRA Category 1 credit(s)[™]. Each physician should claim only
those hours of credit that he/she actually spent in the educational
activity.
- Contact for additional information and RSVP:
Cindy Crump, Fellowship Coordinator
IU Colon & Rectal Residency Program
Kendrick Regional Center
317-834-9618
Cindy.c@kendrickcenter.com

Please submit CME to mhadley@imsonline.org
by the first of the month preceding publication.

Practice Billing, LLC

Medical Billers

- Electronic Claims Transmission
- Aggressive Follow-up; Denied,
Delayed; Underpaid Claims
- Patient Billing
- Patient Billing Phone Calls
- Improve Your Accounts Receivable

1311 N. Arlington Avenue, Suite 205
Indianapolis, Indiana 46219

Call 317-375-3681



Gene Moneymaker

Meetings & Events

Join ISMA Women in Medicine (WIM) at the Luncheon & Spa Day

- Date: Saturday, April 17, 2010
Time: 10:00am Business Meeting of the ISMA
Women in Medicine Ad Hoc Committee
12:00pm Lunch Sponsored by ProAssurance
and Brown & Brown Insurance
Afternoon Spa Services arranged on your own
- Place: The Villa Inn • Restaurant • Spa
1456 N Delaware Street, Indianapolis
Indiana 46202
- Co-chairs WIM: Heidi Dunniway, MD, ENT, Indianapolis
Maria Del Rio Hoover, MD, Neonatologist, Evansville
For details contact: Susan Armstrong, Indiana State
Medical Association, 322 Canal Walk, Indianapolis, IN 46202-
3268, Direct: (317)454-7740, Toll free: (800) 257-4762, Fax: (317)
261-2076, e-mail: sarmstrong@ismanet.org

Indianapolis Medical Society

April

- 17 ISMA Women in Medicine (WIM) Luncheon & Spa Day
19-23 Staff Appreciation Week
(Administrative Professional's Day, Wednesday, April 21)
20 Executive Committee, Society, 6:00 p.m.,
In Combination with IMS Board Meeting
20 IMS Board, Society, 6:00 p.m., Social; 6:30 p.m., Dnr/Mtg.

May

- 1 Alliance Scholarship Deadline
18 Executive Committee, Society, 6:00 p.m., Sandwiches
23 IMS Advisory Breakfast, 7:30 a.m., ... prior to BOT
23 ISMA BOT, 9:00 a.m., ISMA Headquarters
TBA MSE Board Meeting, Society, 6:15 p.m., Sandwiches

June

- 1 IMS Board, Society, 6:00 p.m., Social; 6:30 p.m., Dnr/Mtg.
9 Senior/Inactive Luncheon Meeting, Noon, Society

Colonoscopy? It's worth the prep.

 **Kendrick Regional Center**
Colonoscopy
Making lives better.
www.kendrickcenter.com

Talent Gallery



Above is a photo of a turned wooden bowl made of white pine. "It came from a neighbor's tree that had fallen down across their drive for them so they did not completely lose their prized pine tree." Jeffrey A. Greenberg, MD, MS, Indiana Hand to Shoulder Center

Advertisers' Index

American Physicians Assurance, Co.....	23	Midwest Pain Institute.....	15
Amerigroup Corporation	4	The National Bank of Indianapolis.....	4
Center for Pain Management.....	10	Northwest Radiology Network	24
Central Indiana Cancer Centers.....	13	Practice Billing, LLC.....	21
Diamond Capital Management.....	13	Staples.....	15
Fifth Third Private Bank	9	Superior Linen Service.....	29
ISMA Insurance Agency	14	VeinSolutions.....	23
Kendrick Regional Center	21	IMS BULLETIN, WEB - Bulletin & Web deadlines are the first of month preceding publication. To advertise email mhadley@imsonline.org or call 639-3406 or for sponsorship opportunities call Beverly Hurt, EVP or email ims@imsonline.org . Advertising and Sponsorship opportunities, rates and contracts are available online at http://imsonline.org/advertisingSponsorships.php	
Sonnie Laviolette, F. C. Tucker Co., Inc.....	6		
The Marina Limited Partnership	3		
Medical Protective	2		
Meridian Health Group	13		

We've Got Your Back!

Exceptional Coverage. Proven Stability.

You can practice with confidence, knowing that American Physicians offers the coverage, protection and financial stability you deserve. Year after year, we set the standard with:

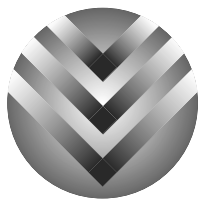
- Financial strength – rated "Excellent" by A.M. Best
- Committed to Midwest physicians since 1976
- Endorsed by medical societies
- Industry-leading claims service
- Competitive, sustainable rates
- Claims-free discounts of up to 15%
- Additional discounts for the best practices
- Enhanced tail coverage

Find out how you can benefit by switching your coverage to the company trusted by Indiana's leading doctors. Call us today at 800-748-0465, or e-mail assistance@apassurance.com.



Rated A- "Excellent" by A.M. Best
Endorsed by Medical Societies
www.apassurance.com

American Physicians
ASSURANCE CORPORATION
Practices That Set The Standard



VeinSolutions™

Leaders in Cosmetic & Therapeutic Vein Care

A DIVISION OF CORVASC MD'S, P.C. 

Comprehensive Diagnosis & Treatment of
Varicose Veins, Spider Veins &
Vascular Birthmarks

Sclerotherapy

Laser/Light Therapy

Minimally Invasive Venous Ablation

On Site Venous Diagnostic Testing



Board Certified Vascular Surgeons

Richard W. Chitwood, M.D., F.A.C.S.

A. Joel Feldman, M.D., F.A.C.S.

William R. Finkelmeier, M.D., F.A.C.S.

Randy J. Irwin, M.D., F.A.C.S.

317.582.7676 • 800.477.0233

13450 N. Meridian Street • Suite 160 • Carmel, IN 46032

www.veinsolutions.com

 AT ST. VINCENT CARMEL



NWR
 NorthwestRadiologyNetwork
"Trusted Imaging Since 1967"

Row 1: Patricia E. Ladd, M.D., Eric E. Elliott, M.D., Timothy L. Davis, M.D., Homer E. Beltr, M.D., Vincent F. Matthews, M.D. - President & CEO, John A. Morton, M.D., Steven A. Frisch, M.D., C. Nazem Shivaner, M.D., William B. Carthel, M.D.

Row 2: Marty Buewing - Director of Information Technology, Brad Dixon - Radiologist Assistant, Lori J. Wells, M.D., Karen T. Dieke, M.D., Steven J. Willig, M.D., Jack J. Moss, M.D., Theodore F. Lubin, M.D., Edward H. Bartley, M.D., Veronica J. Martin, M.D., Laura O. Dugan, M.D., Jane S. Mitchell, M.D., Jonathan Kahn, M.D., Linda Wilgus - Executive Director, Lori Becker - Director of Operations

Row 3: Peter D. Arfken, M.D., J. Mark Michael, M.D., William E. McGraw, M.D., Richard L. Ballitt, M.D., David J. Golliver, M.D., Benjamin B. Kurma, M.D., Brian J. Wargit, M.D., Carlo R. Lazzaro, M.D., Kathy S. Clark, M.D., Eric E. Beltr, M.D., Michael S. Skudski, M.D.

Not Pictured: Caryn C. Anderson, M.D., Margaret A. Bireghe, M.D., Jack H. Dren, M.D., Janalya P. Ferguson, M.D., Thomas F. Hagman, M.D., W. Kent Hansen, M.D., Charles A. Lerner, M.D., Charles C. Mahy, M.D., J. Michael Phelps, Jr., M.D., Frank J. Pistoria, M.D., Jeffrey E. Reiden, M.D., Anthony V. Zaccararo, M.D.

Northwest Radiology

We measure up to the competition for ALL your imaging needs.

With our exceptional quality, unbeatable costs, and numerous accreditations, it's easy to see that Northwest Radiology Network measures up to the competition in every area. Come see for yourself at any of our locations.

Centralized Scheduling
 317 XRAY NOW (972-9669)
 800-400-XRAY (9729)

NWR
 NorthwestRadiologyNetwork
"Trusted Imaging Since 1967"

www.northwestradiology.com

