

**DocBookMD**

*Courtesy of Capson  
Physicians Insurance*

## *The Indiana POST Program*

*See Dr. Richard Rhodes President's Page*



August is  
National  
Immunization  
Awareness  
Month



Presorted Std.  
U.S. Postage  
PAID  
Indianapolis, IN  
Permit 8365

Indianapolis Medical Society  
631 East New York Street  
Indianapolis, IN 46202-3706

# #1 Team for Overall Heart Care

At Franciscan St. Francis Health—Indianapolis, breakthroughs in heart care have become part of our legacy. We created the Emergency Heart Attack Response Team protocol, which has transformed heart attack care around the globe. Today, our dynamic team is pioneering heart valve surgery and leading advancements in science and heart care.

St. Francis Health is a destination of choice for those seeking exceptional outcomes.

Our newest list of achievements shows that when it comes to your heart, only one hospital has the Total Heart Team 24/7/365 and is #1 in Indiana for Overall Cardiac Care.



#1 in Indiana for Overall Cardiac Care

5-Star Rated for Heart Attack Treatment

5-Star Rated for Valve Repair and Replacement Surgery

5-Star Rated for Coronary Interventional Procedures

5-Star Rated for Heart Failure for 5 Years in a Row (2008-2012)

America's 100 Best Hospitals for Cardiac Care



 **Franciscan ST. FRANCIS HEALTH**  
HEART CENTER

Dedicated team of independent and Franciscan St. Francis Health physicians.

[MyHeartCare.net](http://MyHeartCare.net)

# LUXURY LIVING ON THE LAKE

*At Home on the Water*

*Creating a lake living lifestyle—be part of it!*



## Waterfront Communities

If you are interested in living on the water, The Marina Limited Partnership has a host of options for you. With six distinctive communities on three Central Indiana lakes, we'll help you find the perfect waterfront, water access or off-water lot for your home. Special in-house lot financing is available in all of our communities.



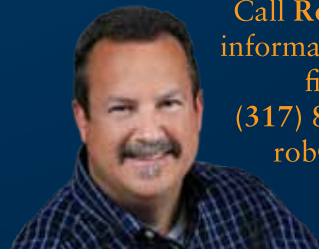
**ASK ABOUT  
SPECIAL  
IN-HOUSE  
LOT FINANCING**



The Marina Limited Partnership

[www.marinalimited.com](http://www.marinalimited.com)

Call **Rob Bussell** for lot information, pricing and financing options.  
(317) 845-0270 ext. 24  
[rob@robbussell.com](mailto:rob@robbussell.com)





**MIDWEST  
PAIN & SPINE**

**NEW NAME,  
NEW LOCATION,  
SAME GREAT SERVICE.**

*Specializing in the Diagnosis & Treatment of Back and Spinal Pain!*



Steven Levine, MD



William Hall, MD



Markus  
Niederwanger, MD

*Types of Pain Treated*

- Acute & Chronic Back Pain
- Cervical Spine (Neck) Pain & Related Headaches
- Herniated Discs
- Degenerative Disc Disease
- Sciatica / Radiculopathy
- Spinal Facet Syndrome
- Spinal Stenosis (*Lumbar & Cervical*)
- Spondylosis (*Spinal Arthritis*)
- Work & Sports Related Injuries

*Available Treatments*

- Fluoroscopic Epidural Steroid Injections (*Cervical, Thoracic & Lumbar*)
- Nerve Blocks (*Diagnostic and Therapeutic*)
  - Sympathetic Nerve Blocks
  - Fluoroscopic Selective Nerve Blocks
- Facet Joint Injections
- Sacroiliac Joint Injections
- Radiofrequency Procedures
  - Facet Denervation
  - Rhizotomy
  - Sympathectomy
- Nucleoplasty
- Neuroplasty
- Discography
- Selective Endoscopic Discectomy (SED)
- IntraDiscal ElectroThermal Annuloplasty (IDET)
- Spinal Cord Stimulation

**See our NEW CARMEL LOCATION at 12289 HANCOCK ST.!**



**MIDWEST  
PAIN & SPINE**

Avon | Carmel | Kokomo | Mooresville | Muncie

phone 317.815.8950  
fax 317.815.8951  
toll free 866.815.8950

[www.midwestpain.net](http://www.midwestpain.net)

Official monthly publication of the  
Indianapolis Medical Society  
631 E. New York St.  
Indianapolis, Indiana 46202-3706  
Phone: (317) 639-3406  
Fax: (317) 262-5609  
Web Page: <http://www.imsonline.org>  
E-mail: [ims@imsonline.org](mailto:ims@imsonline.org)

Indianapolis Medical Society President  
Richard H. Rhodes, MD

President-Elect  
Bruce M. Goens, MD

Direct copy for publication and inquiries regarding advertising to:

Executive Vice President and  
Editor, *The IMS Bulletin*  
Beverly Hurt

Associate Editor, *The IMS Bulletin*  
Marcia K. Hadley

*The Bulletin* invites news from and about members of the Indianapolis Medical Society. Copy deadline: First of the month preceding month of publication.

**Advertising:** Rates available upon request. Advertisers should provide electronic files by the first of the month preceding publication. Placement of advertisements, except for premium spaces, will be throughout the publication at the discretion of the editor.

Statements and conclusions of authors that are published in *The Bulletin* are solely those of the authors and do not necessarily reflect Indianapolis Medical Society policy or position. The Indianapolis Medical Society makes no representation or warranty as to their accuracy or reliability. Advertisements published in *The Bulletin* do not imply approval or endorsement by the Indianapolis Medical Society, but represent solely the viewpoint of the advertiser or their agent.

**ATTENTION SOCIETY MEMBERS**

We like to feature photographs or other artwork shared by IMS members on the cover of *The Bulletin*. Submit photographs, artwork, etc., to Beverly Hurt at the Society Office, [bhurt@imsonline.org](mailto:bhurt@imsonline.org).

*The Bulletin* is your magazine. Share your views by submitting reprints of your published articles; articles written expressly for *The Bulletin*; quips; short stories; brief comments; ideas; cartoons, etc.

Remember the *Indianapolis Medical Society Foundation* when planning your will. (Contribution form included in this issue.) Unless otherwise specified, your contribution will be directed toward medical scholarships.

*Bulletin* Subscriptions: \$36.00 per year  
AMA Web Page: <http://www.ama-assn.org>  
IMS Web Page: <http://www.imsonline.org>

**in this issue**

**Special Features**

President's Page

*The Indiana POST Program*

Richard H. Rhodes, MD..... 7

Senior/Inactive

*Speaker: Dr. Gonzalo "Gonz" Chua  
China – A Journey of a Lifetime,*

William H. Dick, MD..... 8

Project Health

*Thank you, Maximillian "Max" S. Newell, MD*

Carrie Jackson Logsdon, Director ..... 16

**Departments**

About Our Cover ..... 5  
Advertisers' Index..... 22  
Bulletin Board..... 11  
Classified Advertising..... [www.imsonline.org](http://www.imsonline.org)  
CME & Conferences..... 20  
IMS Leadership ..... 18  
In Memoriam..... 12  
New Members ..... 14

**about our cover**



On our cover:

***The Indiana POST Program***

Please see The POST (Physician Orders for Scope of Treatment) Program, on

Dr. Richard Rhodes' President's Page in this issue of the *Bulletin*.

For further information about National Immunization Awareness Month, National Center for Immunization and Respiratory Diseases Centers for Disease Control and Prevention, 1600 Clifton Road NE, MS E-05, Atlanta, GA 30333, (800) CDC-INFO (232-4636) English/Spanish, (888) 232-6348 (TTY) (404) 639-7394 Fax, (877) 394-8747 International Travel Information [www.cdc.gov/vaccines/events/niam/default.htm](http://www.cdc.gov/vaccines/events/niam/default.htm)



WISE BANKING CAN LEAD TO  
**AN ADVENTUROUS LIFE.**

Dr. Jerry House

Now that Dr. Jerry House is transitioning out of his practice, he has more time to live the adventurous life he dreamed of. From riding cross-country with his wife to touring Florida, his wise banking relationship with STAR is paying off. But for Jerry, a third generation STAR customer and board member, the destination was never in doubt. Is yours?

From personal banking to lending and investing, we can get you on track to the exciting life you are dreaming of.

Contact: **Charlie Pike**, Private Banker  
charlie.pike@starfinancial.com  
317.566.3116

  
Bank | Insurance | Private Advisory

[starfinancial.com](http://starfinancial.com)



Member FDIC

© 2012 STAR Financial Group



## The Indiana POST Program A New Approach to Honoring Patient Treatment Preferences

Susan Hickman, PhD, Associate Professor, School of Nursing, IU

*I admitted yet another terminally ill patient who had definite no code orders written during previous admissions which were to have been continued at the nursing home. Somehow those orders were changed to full code and the patient was intubated and delivered to the emergency room for more "life saving heroics." I was able to discuss this recurring problem with Dr. Dale Theobald (Medical Director of Palliative Care at Community Hospital) and Stacey Sharp (Director, Life's Journey Integration Services at Community Hospital) who referred me to Susan Hickman, PhD, Associate Professor, School of Nursing, IU. As it turns out there is a program developed to ensure that patients' end of life wishes are carried out. Dr. Hickman is nationally recognized for her work with the POLST (Physician Orders for Life-Sustaining Treatment) paradigm. Please enjoy the following information about the Indiana POST Program.*

### What is POST?

Living wills are largely ineffective at ensuring patient treatment preferences are honored at the end of life for a variety of reasons.<sup>1</sup> The POST (Physician Orders for Scope of Treatment) Program is designed to overcome the limitations of living wills to help ensure that patient preferences for life-sustaining treatments are communicated and honored. The centerpiece of the POST Program is a form that contains immediately actionable medical orders addressing resuscitation, medical interventions (e.g., hospitalization), antibiotics, and artificial nutrition. These orders are based on patient preferences to have or decline interventions and direct care provided by nursing and emergency medical personnel. POST forms transfer with patients across care settings to ensure preferences are honored throughout the healthcare system.

The POST form is specifically intended for seriously ill patients with advanced chronic progressive illness, advanced frailty, or terminal illness. It is frequently used in the skilled nursing facility and hospice setting. The voluntary form is completed based on a conversation between the patient and/or his designated surrogate and a health care provider, which could be either the patient's physician or a physician designee. The form requires a physician signature and a patient or surrogate signature in order to be activated.

In a large, federally-funded multi-state study of POST form use in nursing facilities, residents with POST form orders were significantly more likely to have treatment preferences documented as orders in their medical records than residents without the form.<sup>2</sup> The orders on POST also successfully directed treatment decisions. Treatments provided were highly consistent with POST form orders for resuscitation (98%), medical interventions (92%), and antibiotic use (93%).<sup>3</sup>

### POST in Indiana

Since it was created in the early 1990s, the POST Program has spread to 14 states. An additional 20 states are in the

process of developing programs ([www.POLST.org](http://www.POLST.org)). The Indiana Patient Preferences Coalition (IPPC), co-chaired by Gerald Walthall, MD, FACS (Franciscan Alliance) and Susan Hickman, PhD (IU School of Nursing) formed in 2010 with the goal of developing an Indiana version of the POST Program. It has quickly grown to include over 45 members representing key stakeholder groups including the Indiana State Medical Association (ISMA), the Indiana Academy of Family Physicians (IAFP), the Indiana Medical Directors Association, and the Indiana Hospital Association. Both the ISMA and the IAFP passed resolutions in 2011 in support of POST implementation. POST legislation was introduced in the 2012 legislative session by Representative Tim Brown, MD, but the bill did not make it out of committee due to a lack of quorum.

### Barriers to POST Legislation in Indiana

A primary barrier to POST legislation is the existence of the current DNR statute (IC 16-36-5), which contains statutorily specified language that is incompatible with POST and limits its usefulness. The current DNR statute requires that patients either be unable to survive CPR or be "terminal," a label that excludes a large population of patients with advanced chronic progressive disease or advanced frailty. These patients may wish to limit treatments when the burdens of medical interventions begin to outweigh the benefits, but are unlikely to be identified as "terminal." Additionally, the existing out-of-hospital DNR order form requires two unrelated witnesses. This requirement creates barriers to patients receiving care in the community setting such as those enrolled in hospice care and represents a challenge in nursing facilities, as many prohibit employees from witnessing.

Another key barrier to Indiana POST legislation is determining who is authorized to execute a POST form on behalf of an incapacitated patient. Indiana statutes recognize the need for default surrogate decision-makers in the event that a person loses decisional capacity without formally appointing a health care representative. In these situations, decisions can be made by a spouse, a parent, an adult child, or an adult sibling. However, Indiana's statutes are unique in that they do not specify a hierarchy. Instead, each family member has an equal right to make decisions on behalf of the incapacitated patient, which could be problematic if there are disagreements about what is best for the patient in the process of completing a POST form. Additional issues requiring further study include how the POST program is used within the hospital and whether nurse practitioners should be permitted to sign, as is the practice in several other states.

### Benefits to POST Legislation

If POST legislation were passed in Indiana, eligible patients would be able to document their preferences in a format that is easily understandable to clinicians. Hoosiers would be able to benefit from an evidence-based intervention that successfully

*Continued on page 22.*



William H. Dick, MD

## Speaker: Dr. Gonzalo “Gonz” Chua

### China – A Journey of a Lifetime

Dr. Gonzalo “Gonz” Chua is a radiologist who practiced at St. Francis and Methodist Hospitals. He was Director of Radiology Education at Methodist for 20 years. Born and raised in the Philippines, he also attended Medical School there; Gonz is of Chinese descent. After getting married, he traveled to Canada for Medical/Surgical training. He had planned to go into Family Practice, but a colleague encouraged him to consider radiology. This led him to the Indiana University Medical Center for a residency and he has lived here ever since. Dr. Chua has hobbies of Tai Chi and Chinese painting. He also founded a free Asian Medical Clinic.

China has a 5,000 year history. It is about the same size as the U.S., with the western one-half mostly desert and the eastern half contains the population and the ports. Most Chinese are descendants of the Han people. The word Han comes from the Han Dynasty (220-206 BC). That time is considered to be a classical period in Chinese civilization. The Han are the largest ethnic group in the world. The old capitol had been in Nanking but the Communists moved it back to Beijing. A prose description of all the beautiful photos that were shown by Gonz is not possible. The slides depicted a new China, but one with all the same beautiful mountains, gardens and landscapes.

Dr. Chua had previously traveled to China in 1987. What he saw in his 2011 trip amazed him. Such prosperity and such energy! First it was mostly bicycles and old trucks on the road. Now it is mostly automobiles – from all over the world. The 30-day trip took him to 13 cities, sent him on one overnight train ride, a three-day Yangtze River cruise and a day on a Li river cruise.

The box-like Soviet architecture of Beijing in 1987 has become a completely modern city. While he was there, he visited Beihai, the 14<sup>th</sup> century gardens and Wanfuching Avenue, the main commercial street, with so many luxury shops. The Summer Palace was on the list of sites, as was the Forbidden City with its 9,999 rooms. They also toured the Temple of Heaven and Tianamen Square, the world’s largest. 2,800



buildings were removed to allow for construction of the Square. Beijing, with a population of 20 million people, has nine ring roads around it.

Gonz learned about the Silk Road, the ancient trade route between China, central Asia, Europe and Africa. It split into two branches, with one going to Rome and the other to India. A must visit was to the Great Wall, which travels 4,000 miles from south to northeast. It took 10 years to build and many casualties were sustained during the construction. The Wall was built in many stages; the first one was constructed in 220-206 BC. The concept was revived again during the Ming dynasty in the 14<sup>th</sup> century. It was meant to keep out the nomadic tribes. Can the Great Wall be seen from outer space? It can perhaps be seen from 100-200 miles away from the earth. Other astronauts say that binoculars would be needed even at that range.

Next up on the trip was Xian – the ancient Capitol from 200 BC to the 14<sup>th</sup> century. It is also the place where the terra cotta warriors were fashioned. An emperor had planned for all of the statues to be buried with him. There were 8,000 warriors, chariots and horses constructed over a 38 year period. It was thought that they could be built in 10 years. Each face of a warrior is distinct.

Gonz did visit the Great Wall, of course. He found out that it is a strenuous walk. At the western end of the Wall is the Jiayuquan Fort with the first Beacon Tower. Even today, it is difficult to imagine the tremendous effort involved in building this colossal

wonder.

China is the home to the world’s largest wind farm. We also learned that the Chinese language has 1,800 characters. There are three different languages in the country but they all write the same. China has been the source of so many inventions: the calendar year, compass, crossbow (dated to mid-5<sup>th</sup> century BC), fireworks, gunpowder, paper and printing.

IMS





**FOR PHYSICIANS  
AFFILIATED WITH  
ST. VINCENT HEALTH**



**Your record of practice is important for many reasons—credentialing, increasing transparency with patients, and protecting your important professional identity.**

**Coverage is about so much more than settling claims. Choose the protection that is like no other in supporting the principles of high reliability.**

Your Certitude™ program for medical professional liability insurance provides:

- Risk management resources to help you manage your practice and enhance patient safety
- Flexible premium payment options to fit your needs
- Physician peer input for difficult claims and underwriting issues
- A unified claims approach that helps you protect your important identity—with no claim settled without your consent
- Enhanced coverage for today's medical environment
- And much more...

Call ProAssurance at **800.284.7424** for more information on Certitude.





From left to right: Sandra Dolny, PA-C; Jocelyn Bush, MD; John Fitzgerald, MD; Edward Kowlowitz, MD; Alina M. Clavijo-Passik, PhD  
Board-Certified Pain Management Specialists

CENTER FOR

**PAIN**  
MANAGEMENT

## We get your patients back to life.

The Center for Pain Management is one of Central Indiana's most experienced medical practices focusing exclusively on treating patients who suffer from back, head, neck, joint or cancer-related pain.

This includes:

- Acute injuries or treatment
- Spinal injuries
- Herniated discs
- Arthritis
- Failed back surgery
- Chronic pain
- Migraines
- Fibromyalgia

Our team of clinicians and board-certified physicians specializes in comprehensive evidence-based diagnostic and multi-disciplinary treatment modalities that include:

- Interventional procedures
- Physical therapy
- Medication management
- Spinal cord stimulation
- Psychological counseling

**317.706.PAIN**

317.706.7246

8805 N. Meridian St.  
Indianapolis, IN 46260

[www.IndyPain.com](http://www.IndyPain.com)

Physician referrals and patient self-referrals are accepted.

# Bulletin Board

**Rick C. Sasso, MD**, Indiana Spine Group, had his 11th United States patent assigned by the United States Patent and Trademark Office on May 15, 2012. Dr. Sasso's patent #8,180,429 involves instrumentation used for intraoperative surgical navigation procedures. This technology is similar to a Global Positioning System (GPS) utilized in the operating room.

**Mark M. Hamilton, MD**, Hamilton Facial Plastic Surgery, presented on Fractional Laser Facial Resurfacing at the Multispecialty Foundation's Annual Facial Cosmetic Meeting in Las Vegas, Nevada, July 6-10, 2012.

Dr. Hamilton also served as an oral examiner for the American Board of Facial Plastic Surgery's annual examination in Washington, DC, July 15-16, 2012.

**Stephen W. Perkins, MD**, Meridian Plastic Surgeons, recently delivered the M. Eugene Tardy, MD, 2012 Lecture at the University of Chicago in Illinois. He was this year's featured Guest Tardy Lecturer, giving the main Grand Rounds presentation to the University of Illinois Otolaryngology/Head and Neck Surgery Residency research paper presentation day. His talk was titled "The Evolution of Facial Plastic Surgery."

Dr. Perkins was also the graduation ceremony key speaker for the finishing Chief Otolaryngology residents.

Two Northwest Radiology Neuroradiologists, **Vincent P. Mathews, MD**, and **Eric E. Beltz, MD**, have successfully completed an advanced training program in interpreting Neuro PET-CT imaging for Alzheimer's disease. Memory Neuro Imaging Center, located in the Meridian North Imaging Center in Carmel, is one of the nation's premier facilities that has been selected to introduce this procedure to the medical community. JWM Neurology and NWR (Northwest Radiology Network) have joined forces to promote a new test to help accurately diagnose Alzheimer's disease (AD) using the radiopharmaceutical Amyvid. The FDA has recently approved Amyvid, which is produced by Eli Lilly and its subsidiary Avid RadioPharmaceuticals and is a radioactive diagnostic agent indicated for brain imaging of beta-amyloid plaques in patients with cognitive impairment who are to be evaluated for Alzheimer's disease and other cognitive disorders.

**Tim E. Taber, MD**, was a member of the team that gave a patient a chance. Caleb Johnson was given a new lease on life on June 13, 2012, when his friend, Colin Newton, made a life-saving organ donation. Both donor and recipient shared their journey with the world as their surgeries were broadcast live via Twitter. Caleb and Colin participated in this ground-breaking endeavor to raise awareness for living organ donation. By donating one of his kidneys, Colin helped two people – Caleb and the next person on the waiting list.

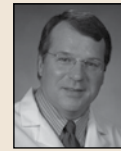
If you missed the Twittercast of this living organ donation, watch the videos about Caleb and Colin and then read more at #calebskidney.



Eric E.  
Beltz, MD



Mark M.  
Hamilton, MD



Vincent P.  
Mathews, MD



Stephen W.  
Perkins, MD



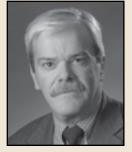
George H.  
Rawls, MD



Theresa M.  
Rohr-Kirchgraber, MD



Rick C.  
Sasso, MD



Tim E.  
Taber, MD

**Theresa M. Rohr-Kirchgraber, MD**, presented "Picky Eating: Pediatric Conditions with Adult Consequences" at the Indiana Rural Health Association Annual meeting in Indianapolis.

Dr. Rohr-Kirchgraber was recently voted in as Vice Chair of the AMA Women's Physicians Caucus at the AMA annual meeting in Chicago.

**George H. Rawls, MD**, distinguished senior member of the Indianapolis Medical Society has released his latest book, *How to Solve the Healthcare Crisis in America*. The book is available through Amazon.com.

*How to Solve the Healthcare Crisis in America* examines the current state of our health care system and gives advice on how real reform should happen. Not one entity is responsible for the crisis and not one entity can be responsible for the cure. No one is exempt: doctors, hospitals, government agencies, and even patients themselves. The author examines health care coverage in other countries, as well as, in America – what's good and what's bad. This book delves into the current problems with America's health care system and gives practical advice on how to reform the system. This book is timed perfectly. As the government continues to grapple with health care reform, author George Rawls, MD, gives a clear roadmap.

George H. Rawls, MD, a native of Gainesville, Florida, graduated co-valedictorian of Lincoln High School, Summa Cum Laude at Florida A & M University and with honors from Howard University School of Medicine where he utilized a full Pepsi Cola Scholarship. After two years in the army, he completed a surgical residency under Ohio State University. He practiced surgery in Indianapolis for 34 years. He then became Assistant Dean and Clinical Professor of Surgery at Indiana University School of Medicine for five years before retiring and retaining these titles with emeritus status.

Dr. Rawls has served the IMS and ISMA for decades, serving on the IMS Board, Past President of both organizations, and as a Delegate to the American Medical Association.

IMS



## Tradition. Excellence. Care.

### A Leader in Urology since 1887

 **Urology  
of Indiana**  
**FORLIFE**  
www.urologyin.com

# In Memoriam



**William Elmer McGraw, MD**  
1943 - 2012

Dr. William Elmer McGraw, 68, of Indianapolis, passed away June 15, 2012. He was born November 5, 1943, in St. James, Missouri.

Dr. McGraw received his Bachelor's Degree from the University of Notre Dame. He earned his Doctor of Medicine at Ohio State University. Dr. McGraw interned at Mt. Carmel Hospital, Columbus, Ohio and completed his residency at the Mayo Clinic, Minnesota.

For two years, he served as a Major in the U.S. Army during the Vietnam War.

Dr. McGraw retired in 2011 from Northwest Radiology as a Diagnostic Radiologist.

He loved travel, music, and reading. He was an avid football fan, and was fiercely loyal to Notre Dame and the Colts.



**Call Matt**  
**(317) 590-0529**



**Matt McLaughlin** | Visit: [www.CallMatt.org](http://www.CallMatt.org)  
F.C. Tucker Company, Inc.

## Practice Billing, LLC

### Medical Billers

- Electronic Claims Transmission
- Aggressive Follow-up; Denied, Delayed; Underpaid Claims
- Patient Billing
- Patient Billing Phone Calls
- Improve Your Accounts Receivable

1311 N. Arlington Avenue, Suite 205  
Indianapolis, Indiana 46219

**Call 317-375-3681**



*Gene MoneyMaker*

# ASK IMS

*We're Here to Help!*

CREATE AN IMAGE™

With



### Specialists in Healthcare Linen Services

- We will **launder** the linens, uniforms, and professional clothing that you already own.
- We will **rent** and **launder** linens, uniforms, and professional clothing.
- We will **sell** linens, uniforms, and professional clothing.
- We will **rent, sell,** and **launder** linens, uniforms, and professional clothing in any combination.
- We will **pick up** and **deliver** to your place of business.
- Samples of our products are available for your inspection.
- **We practice universal precaution standards.**
- For a free price quote or further explanation of our services . . . please call:

**In Indianapolis: 634-0833**

**In Muncie: 284-4411**

## FREE BOOKLET

**NO COMMITMENT. NO CATCH.**  
**JUST THE FACTS.**

I.C. System's newest booklet is filled with money-saving and money-generating ideas related to collections and it is absolutely **FREE** for IMS Members.



### **TITLE: THE IN\$IDE FACTS:**

Things Most Collection Agencies Won't Tell You.

### **LEARN:**

- How to quickly tell if an agency truly invests in COMPLIANCE
- Why agencies engage in "forwarding"
- What to be aware of regarding pricing
- And much more...

### **REQUEST BOOKLET BY:**

**Calling 800-279-3511**

**Visiting [www.icmemberbenefits.com](http://www.icmemberbenefits.com)**



1008A6345AD1

JWM Neurology  
**EMG/Nerve Conduction Studies**  
**Promptly At All JWM Neurology Offices**



**For a Patient Referral Call the  
JWM EMG Express Line:  
317-806-6939**

**Northwest**

8402 Harcourt Rd.

**Carmel**

12188A N. Meridian St.

**Northeast**

7250 Clearvista Dr.

**East**

1400 N. Ritter Ave.

**South**

8051 S. Emerson Ave.

**Mooresville**

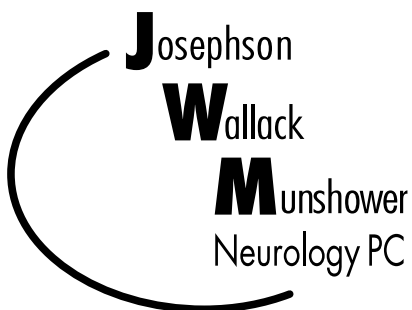
1001 Hadley Rd.

**Franklin**

1159 West Jefferson St.

**Kokomo**

2330 S. Dixon Rd.



Comprehensive Neurological Expertise  
Compassionate Patient Care

[www.jwmneuro.com](http://www.jwmneuro.com)

[www.jwmneuro.blogspot.com](http://www.jwmneuro.blogspot.com)

## New Members



**Goedde, Timothy A., MD**  
(Reactivation)  
Midwest Breast Center  
8101 Clearvista Pkwy., #270  
46256-4675  
Ofc – 201-1190

Email – tgoeddemd@msn.com  
Surgery, 1991, 2011  
Surgical Oncology  
Other Specialty  
Indiana University, 1985

**Harned, E. Michael, MD**  
IN Radiology Partners  
714 N. Senate Ave., #100  
46202-3297  
Ofc – 963-9342  
Fax – 962-1147  
Email – michaelharned@lycos.com  
Web – www.radiology.medicine.iu.edu  
Diagnostic Radiology, 1990  
Neuroradiology, 1995, 2005  
Jefferson Medical College, 1985

**Nguyen, Phuong H., MD**  
Resident – IU Colon & Rectal  
1215 Hadley Rd., #201  
Mooresville, 46158-2905  
Ofc – 834-2020  
Fax – 831-9292  
General Surgery  
Colon & Rectal Surgery  
Florida State University  
College of Medicine, 2006

**O'Connell, Elise M., MD**  
Resident – IU School of Medicine  
Internal Medicine  
Loyola University, 2009



**Spahr, Roger G., MD**  
(Reactivation)  
The Spahr Center  
3003 E. 98th St., #261  
46280-1973  
Ofc – 708-3939

Fax – (888) 255-9859  
Email – nurse@spahrcenter.com  
Web – www.spahrcenter.com  
Family Medicine, 1986, 1994  
Other Specialty  
Indiana University, 1983

IMS

### Advertising

To advertise email  
mhadley@imsonline.org or  
phone 639-3406.

Advertising rates and  
contracts are available online  
at [http://imsonline.org/  
advertisingSponsorships.php](http://imsonline.org/advertisingSponsorships.php)

**Are increased health  
insurance premiums  
strangling your  
practice's budget?**

**Are reductions in  
health insurance  
benefits  
putting more stress  
on your employees?**

**Is your current  
health insurance  
coverage  
anniversary date in  
the near future?**

If you answered yes to any of the above questions, consider the Indianapolis Medical Society members program for a discount on group health insurance through **ADVANTAGE HEALTH SOLUTIONS**, a local health plan owned by local providers. IMS physician practices and the IMS are benefiting from this discount and the move to **ADVANTAGE**.

The IMS alone will save more than \$200,000 over two years!

To find out more about the program, or to see if it is a good fit for your practice, please contact the exclusive agents for this product's IMS discount:

Call (317) **564-4003**, or visit Acumen's website:  
[acumenbenefitsolutions.com/IndplsMedSociety.html](http://acumenbenefitsolutions.com/IndplsMedSociety.html)

**Acumen**  
Benefit Solutions, LLC

## IMS Membership

The IMS is a component of the Indiana State Medical Association and the American Medical Association with AMA optional. Your IMS Membership includes these benefits (for a complete list, call 639-3406 or visit [www.imsonline.org](http://www.imsonline.org)):

- Representation and advocacy at all meetings of the AMA and ISMA House of Delegates making sure your voice is heard
- Liaisons with civic, governmental, health and hospital organizations, the public and the media
- FREE Patient Referrals
- FREE \$100,000 air travel insurance for all Members
- Annual 7th District Meeting ... providing physicians and their families in Hendricks, Johnson, Marion and Morgan Counties the opportunity to meet and elect representatives at a family-oriented event
- Advantage Health Solutions - IMS offers its Members a discount on group health insurance through a local provider-owned health plan.
- DocBookMD (Sponsored by Capson Physicians Insurance) - By partnering with DocBookMD, IMS is able to offer Members a next-generation HIPAA compliant multi-media communication tool.
- iSALUS - 20% Discount on or part of OfficeEMR™ from iSALUS for the first year. OfficeEMR™ is a fully-integrated medical records system for solo practitioners, groups and large medical organizations
- Favorite Healthcare Staffing - As the exclusive provider of staffing services for the IMS, Members can enjoy Favorite's preferred pricing on a full-range of recruitment and staffing services
- Transworld - cost effective, diplomatic and systematic service that resolves past due accounts. Transworld charges a fixed rate per account with special pricing for IMS Members only. The unit cost set for a practice is determined by the average number of accounts placed per month and is paid for on a monthly basis. 100% Profit Guarantee
- Staples - Exclusive discounts ... for your practice, home office and home. Call the IMS at (317) 639-3406 to set-up your access.
- Hertz - Special year-round discounts on your daily, weekly, weekend, and monthly rentals.
- I. C. System - We have partnered with America's largest privately owned debt collection agency since 1993.
- The IMS provides more than 50 special benefits to Members!

# Simple Spine Surgery?

## *There's no such thing.*

And yet, we hear it time and time again: I send my "simple spine" one place but my complex cases go to a neurosurgeon.

Every spine surgery involves carefully working around delicate, inflamed nerves. When nerves are involved, a "simple spine" case can turn complex quickly.

Only neurosurgeons have the advanced training to effectively treat these fragile structures that are the root of your patient's pain.

Simple spine. Complex spine. Choose Goodman Campbell Brain and Spine for all your spine patient needs. We are your nervous system specialists, with over 30 neurosurgeons and 4 fellowship-trained interventional pain physicians to give your patients the most options for pain relief.

Use our secure online referral form at: [goodmancampbell.com/referrals](http://goodmancampbell.com/referrals). Or call (317) 396-1199 or toll free (888) 225-5464.



**GOODMAN CAMPBELL**  
BRAIN AND SPINE

*The nervous system specialists*

*Private practice and academic neurosurgeons,  
collaborating for the good of patients*

### **Neurosurgeons**

Nicholas Barbaro, MD  
Jamie Bradury, MD  
James Callahan, MD  
Aaron Cohen-Gadol, MD  
Jeffrey Crecelius, MD  
Henry Feuer, MD  
Daniel Fulkerson, MD  
Randy Gehring, MD  
Peter Gianaris, MD  
Eric Horn, MD, PhD  
Steven James, MD  
Saad Khairi, MD  
Thomas Leipzig, MD  
Shannon McCanna, MD  
James Miller, MD  
Jean-Pierre Mobasser, MD  
Paul Nelson, MD  
Troy Payner, MD  
Eric Potts, MD  
Michael Pritz, MD, PhD  
Richard B. Rodgers, MD  
Carl Sartorius, MD  
Mitesh Shah, MD, FACS  
Scott Shapiro, MD, FACS  
Michael Turner, MD  
Thomas Witt, MD  
Robert Worth MD, PhD  
Ronald L. Young, II, MD

### **Pediatric Neurosurgeons**

Laurie Ackerman, MD  
Joel Boaz, MD  
Daniel Fulkerson, MD  
Jodi Smith, PhD, MD  
Michael Turner, MD  
Ronald L. Young, II, MD

### **Interventional Neuroradiology**

Andrew DeNardo, MD  
John Scott, MD

### **Physical Medicine and Rehabilitation**

Amy Leland, MD  
Nancy Lipson, MD

### **Interventional Pain Management**

Christopher Doran, MD  
Anthony Sabatino, MD, FIPP  
Jose Vitto, MD  
Derron Wilson, MD

### **Neuropsychology**

Donald Layton, PhD



# Project Health

Carrie Jackson Logsdon, Director



## Thank you,

## Maximillian "Max" S. Newell, MD



Maximillian "Max" S. Newell, MD, is Project Health's Physician for the Month of August. Although born in Paducah, Kentucky, Dr. Newell grew up in Ft. Wayne. He was the fifth of six children. His father was what he calls an agricultural businessman, on the business side of the huge grain mills near Shipshewana, and his mom was a stay-at-home mom. Unfortunately, his father died when he was 13. He liked biology and the sciences in high school, but didn't think about becoming a physician until his senior year when he shadowed a family friend and otolaryngologist Charles Giffin, MD. "Dr. Giffin told me that if I liked biology so much I should just go into pre-med in college. He was my male role model and gave me a career path. He was kind of a scholarly community doctor who wrote articles, did a lot of indigent care and was a great outdoorsman."

Dr. Newell graduated from Indiana University with a BA in biology and was then accepted to the I.U. School of Medicine. Dr. Newell did a two-year internship in general surgery at Butterworth Hospital in Grand Rapids followed by a three-year residency in otolaryngology-head and neck surgery at Indiana University Hospital. He is now with Otolaryngology Associates, practicing at Franciscan St. Francis Hospital and at Major Hospital in Shelbyville. He said he chose to be a broad based ENT, but in general otolaryngology half of one's patients are pediatric by default.

Dr. Newell and wife, Dana, met in medical school. Her brother was a good friend of Dr. Newell's and the rest is history. They have two daughters. The youngest just graduated from Park Tudor and will be going to the Savannah School of Art and Design in the fall. His oldest daughter attends Indiana University majoring in international studies and is interested in global health initiatives. She became involved in I.U.'s Timmy Foundation for Global Health and in 2011 invited Dr. Newell to go on a mission trip to Guatemala to do primary care.

He said it was a full ten days of clinic work in the highlands. "It is pure medicine with a tongue blade and a flashlight set up in the offices of schools where we saw 150 people a day." What struck him was the wonderful culture. "They are grateful, kind, and incredibly poor, but very noble and humble and make very little go such a long way. Most have parasites, so we hand out medicine, vitamins, and Ibuprofen. They carry huge bundles of sticks to market and get very sore. Many have pulmonary infections, a result of living in smoke-filled little houses with open fires. They were so appreciative to get antibiotics because it really turned their lives around." Dr. Newell believes that plastic surgeons are really needed there because a number of children have fallen into open fires in their homes, until safe stoves were provided to protect the children and also funnel the smoke out of the houses. He also indicated that the villagers have a lot of diabetes and the children have stunting because of poor nutrition, which is why they are incredibly short, so they give them a lot of protein bars and snacks. Dr. Newell explained they have two interpreters – one to interpret Mayan to Spanish, and another to interpret Spanish to English. He said they don't just go in for two weeks and leave. They are replaced by brigades from universities, so care is continual and sustained. In fact, his daughter is the brigade leader for IU next year, and he's going with her again.

In his spare time, Dr. Newell is pursuing a Master's Degree in Fine Arts at Butler University in creative writing. "It's just a good artistic outlet and being a science major I didn't have time to take writing as an undergrad." He is also into fly fishing, mountain biking and is a runner.

As a Project Health volunteer, he said it is just part of being a compassionate doctor – to provide care regardless of means. "We don't look at an insurance card when they come in – it's just the mission of medicine. It is almost implied. The reward is satisfaction that you are helping someone. Keeping people healthy benefits all of society." Nobody can argue with that. We're just glad that you and your partners are there to help our patients who typically wait too long to seek help. Thank You!



### Yes! I want to **Help Project Health**

Enclosed is My 100% Tax-Deductible Contribution:

Check (payable to **Indianapolis Medical Society Foundation**)     Credit Card (Visa, MasterCard, AMEX)

\$100     \$500     \$1,000     \$\_\_\_\_\_

Name: \_\_\_\_\_

Address: \_\_\_\_\_

City: \_\_\_\_\_ State: \_\_\_\_\_ Zip: \_\_\_\_\_

Phone: \_\_\_\_\_ Fax: \_\_\_\_\_

Credit Card: \_\_\_\_\_ Expiration Date: \_\_\_\_\_ Security Code: \_\_\_\_\_

Email: \_\_\_\_\_ Contribution Honors: \_\_\_\_\_

**Indianapolis Medical Society Foundation** • 631 E. New York St., Indianapolis, IN 46202-3706

Phone: 317-639-3406 Fax: (317) 262-5609 [www.imsonline.org](http://www.imsonline.org) [ims@imsonline.org](mailto:ims@imsonline.org)



Portfolio management services  
for individuals and institutions.

**DIAMOND**<sup>®</sup>  
CAPITAL MANAGEMENT

317-261-1900 ♦ [www.dmdcap.com](http://www.dmdcap.com)

Not FDIC Insured ♦ No Bank Guarantee ♦ May Lose Value ♦ © 2012 Diamond Capital Management

## In the City of Franklin – Motivated Seller



**Phone**  
**262-5656**



1-1/4 acre semi-wooded lot featuring: John Kleinops built home of brick and cedar. 2-1/2 story with 5 bedrooms (2 master suites on main level), 4 full baths, upstairs paneled den/home office with skylight, 3 wood burning fireplaces with gas starters, ash drops, 25ft x 20ft two-story great room with balcony and library with beautiful built-in shelving of solid oak/ash pillars, cabinets, ballaster. Big eat-in kitchen with fireplace, new tile floors, center hooded island with plate racks, display nooks, 40ft x 60 ft deep basement with 500 bottle wine cellar. Basement has 40ft x 20ft moisture barrier crawl space. 2 car garage with large detached utility shed for lawn equipment. In-ground pool, 44ft x 19ft with custom built fencing and custom poolhouse/cabana. New hand-tooled standing seam metal roof, 2 French doors with side doors for ventilation. Generous storage space, walk-thru closet, city water and utilities but

property has 2 deep working wells for flower beds, lawn and grape arbor maintenance.

Home has 4916 sq. ft living space with 2400 sq. ft pristine basement space. Original owner is retiring and moving out of state. Motivated to sell his 1968 dream home.



# Indianapolis Medical Society

631 East New York Street • Indianapolis, IN 46202-3706

Phone: (317) 639-3406 • Fax: (317) 262-5609 • E-Mail: [ims@imsonline.org](mailto:ims@imsonline.org) • Web: [www.imsonline.org](http://www.imsonline.org)

## Officers 2011-2012

Richard H. Rhodes .....President  
Jeffrey J. Kellams .... Immediate Past President

Bruce M. Goens..... President-Elect  
Bridget M. Sanders ..... Secretary/Treasurer

## Board of Directors 2011-2012

*Terms End with Year in Parentheses*

Mark M. Hamilton, Chair (2012); David R. Diaz, Vice-Chair (2012)

Mary D. Bush (2012)  
Heidi M. Dunniway (2012)\*  
Robert J. Goulet, Jr. (2012)  
David C. Hall (2012)  
Marc R. Kappelman (2012)  
Jon D. Marhenke (2012)\*  
Anthony W. Mimms (2012)  
Stephen W. Perkins (2012)

Linda Feiwell Abels (2013)  
Richard D. Feldman (2013)  
Ronda A. Hamaker (2013)  
Stephen R. Klapper (2013)  
John P. McGoff (2013)  
J. Mark Michael (2013)  
David H. Moore (2013)  
Barbara K. Siwy (2013)  
Michael T. Stack (2013)  
Tim E. Taber (2013)  
John J. Wernert (2013)

Christopher D. Bojrab (2014)  
Carolyn A. Cunningham (2014)\*  
David R. Diaz (2014)  
Marc E. Duerden (2014)  
John C. Ellis (2014)  
Bernard J. Emkes (2014)  
Paula A. Hall (2014)  
Gerald T. Keener, Jr. (2014)  
John C. Kincaid (2014)  
John E. Krol (2014)  
Gregory N. Larkin (2014)  
Susan K. Maisel (2014)  
John F. Schaefer, Jr. (2014)

\*Appointed from the President's Advisory Council

## Delegates to the State Convention, September 14-16, 2012, Indianapolis JW Marriott

*The year shown in parentheses indicates year in which the term expires following the conclusion of the ISMA Annual Convention.*

Linda Feiwell Abels (2012)  
Christopher D. Bojrab (2012)  
Kathy S. Clark (2012)  
John C. Ellis (2012)  
Alan R. Gillespie (2012)  
Robert J. Goulet, Jr. (2012)  
C. William Hanke (2012)  
Gerald T. Keener, Jr. (2012)  
David H. Moore (2012)  
Robert Michael Pearce (2012)  
J. Scott Pittman (2012)  
Bridget M. Sanders (2012)  
John F. Schaefer, Jr. (2012)  
H. Jeffrey Whitaker (2012)

Anne C. Clark (2013)  
Steven A. Clark (2013)  
Carolyn A. Cunningham (2013)  
David C. Hall (2013)  
Ronda A. Hamaker (2013)  
Stephen R. Klapper (2013)  
Peter M. Knapp, Jr. (2013)  
Susan K. Maisel (2013)  
David M. Mandelbaum (2013)  
John P. McGoff (2013)  
Tim E. Taber (2013)

Mary D. Bush (2014)  
David R. Diaz (2014)  
Gary R. Fisch (2014)  
Jonathan A. Fisch (2014)  
Bruce M. Goens (2014)  
Ann Marie Hake (2014)  
Robert M. Hurwitz (2014)  
Paul D. Isenberg (2014)  
David A. Josephson (2014)  
Marc R. Kappelman (2014)  
Randall A. Lee (2014)  
Mary Ian McAteer (2014)  
Clement J. McDonald III (2014)  
Richard H. Rhodes (2014)  
Jodi L. Smith (2014)

## Alternate Delegates to the State Convention, September 14-16, 2012, Indianapolis JW Marriott

*The year shown in parentheses indicates year in which the term expires following the conclusion of the ISMA Annual Convention.*

Nancy R. Baird (2012)  
Jennifer J. Bucki (2012)  
Stephen R. Dunlop (2012)  
John Duplantier (2012)  
Robert S. Flint (2012)  
Mark U. Kyker (2012)  
Terry L. Layman (2012)  
Patrick J. Lotti (2012)  
Mark R. Ogle (2012)  
David M. Ratzman (2012)  
Jeffrey M. Rothenberg (2012)  
Beata E. Samuel (2012)  
Steven Richard Smith (2012)  
Abideen Yekinni (2012)

Robert J. Alonso (2013)  
David S. Batt (2013)  
Daniel J. Beckman (2013)  
Craig S. Cieciora (2013)  
Marc E. Duerden (2013)  
Brian W. Haag (2013)  
Mark M. Hamilton (2013)  
Andrew A. Johnstone (2013)  
Jeffrey J. Kellams (2013)  
Frank P. Lloyd, Jr. (2013)  
Andrew L. Morrison (2013)  
David L. Patterson (2013)  
Kenny E. Stall (2013)  
Ronald L. Young, II (2013)

William C. Buffle (2014)  
Brian D. Clarke (2014)  
Robert E. Dicks (2014)  
Doris M. Hardacker (2014)  
Douglas J. Horton (2014)  
Daniel E. Lehman (2014)  
Ramana S. Moorthy (2014)  
Maria C. Poor (2014)  
Philip W. Pryor (2014)  
Jason E. Rieser (2014)  
Steven M. Samuels (2014)  
Kenneth N. Wiesert (2014)

### Indiana State Medical Association Past Presidents

Jon D. Marhenke 2007-2008  
Bernard J. Emkes, 2000-2001  
Peter L. Winters, 1997-1998  
William H. Beeson, 1992-1993  
George H. Rawls, 1989-1990  
John D. MacDougall, 1987-1988  
George T. Lukemeyer, 1983-1984  
Alvin J. Haley, 1980-1981

### Indiana State Medical Association House of Delegate

Speaker, ISMA  
John J. Wernert (2011-2012)

### Vice-Speaker, ISMA

Heidi M. Dunniway (2011-2012)

### Seventh District Medical Society Trustees

A. Michael Sadove (2012)  
Richard D. Feldman (2013)  
Vicki M. Roe (2014)

### Alternate Trustees

John C. Ellis (2012)  
John P. McGoff (2013)  
Marc E. Duerden (2014)

## PRIVATE BANKING

# A REPUTATION FOR EXCELLENCE.


A reputation for excellence is not something that comes easily. It's something you earn—the hard way. Painstakingly built year after year by providing consistently superior service. As the area's largest locally owned national bank, we're proud to have earned our reputation as The Bank of Choice. Private Banker Ed Deiwert has established an impeccable reputation after 20 years of exceptional service to clients. His reputation for excellence is well-known, so call Ed at 261-9628 to see for yourself why his reputation is so well-deserved.



THE NATIONAL  
BANK OF INDIANAPOLIS  
Private Banking

*Ed Deiwert*

Ed Deiwert  
Vice President, Private Banker

©2010 The National Bank of Indianapolis www.nbofi.com Member FDIC 

## TAKE ADVANTAGE OF YOUR MEMBERSHIP

*The group purchasing power of the ISMA can help satisfy your insurance needs - at a price you can afford.*

*Call the ISMA Insurance Agency at (317) 471-4229 or (877) 647-2242.*

### THE ISMA INSURANCE AGENCY

offers the following insurance programs exclusively for ISMA members:

Health - PPO & Traditional plans from \$250 to \$5,000 deductibles	Voluntary Employee Benefit Plan Dental, short term disability, term life, universal life, cancer plan, Section 125 Premium Only Plan (P.O.P.)	Term Life
Health Savings Account Plan		Disability
Medicare Carve-out		Umbrella Liability
Dental	Auto	Business Owners Policy
Long Term Care	Homeowners	Worker's Compensation
		Malpractice Liability*

These insurance plans have been specifically designed for ISMA members and their employees to provide the highest quality coverage at the lowest possible cost.



\* Access is available through Medical Assurance of Indiana - ISMA's endorsed professional liability carrier.

# CME & Conferences

## Community Health Network

### Community Hospital East

First  
Wednesday Critical Care Conference  
Medical Staff Conf. Room, 12:00 - 1:00 p.m.

Second  
Wednesday Medical Grand Rounds  
Medical Staff Conf. Room, 12:00 - 1:00 p.m.

Third  
Wednesday Neuro Grand Rounds  
Medical Staff Conf. Room, 12:00 - 1:00 p.m.

### Community Hospital South

Fourth  
Thursday Medical Grand Rounds  
Conf. Rooms A & B, 7:30 - 8:30 a.m.

### Community Hospital North

First  
Wednesday Pediatric Grand Rounds  
Multi Services Rooms 1 & 2  
7250 Clearvista Dr. 7:30 - 8:30 a.m.

First  
Friday North Forum  
Reilly Board Room; 12:00 - 1:00 p.m.

Fourth  
Thursday Psychiatry Grand rounds  
7250 Clearvista Dr.  
Multi-Service Rms. 1 & 2 7:30 - 8:30 a.m.

### Community Heart & Vascular/ Indiana Heart Hospital

First  
Wednesday Imaging Conference:  
rotates Cath & Echo Case Presentations  
TIHH MCV Boardroom Videoconference to  
CHE Bradley Boardroom &  
CHS Education Center Rm. 2-1910  
7:00.- 8:00 a.m.

Third  
Wednesday Ken Stanley CV Conference  
TIHH MCV Boardroom Videoconference to  
CHE Bradley Boardroom &  
CHS Education Center Rm. 2-1910  
7:00 - 8:00 a.m.

Fourth  
Wednesday Disease Management Conference:  
rotates CHF & EP Case Presentations  
TIHH MCV Boardroom Videoconference to  
CHS Education Ctr. Rm. 2-1910, 7:00 - 8:00 a.m.

## Cancer Conferences

### Community Hospital East:

First & Third  
Wednesdays East General Cancer Conference  
Medical Staff Conf. Room, 12:00 to 1:00 p.m.

Fourth  
Wednesday East Multidisciplinary Breast Cancer Conference  
Medical Staff Conference Room  
7:00 to 8:00 a.m.

### Community Hospital North

First & Third  
Tuesdays North Multidisciplinary Breast Conference  
8040 Clearvista Parkway, Suite 550, 7:00 - 8:00 a.m.

First  
Wednesday North Chest Cancer Conference  
8040 Clearvista Parkway, Suite 550, 7:00 - 8:00 a.m.

Third  
Wednesday Melanoma Cancer Conference  
8040 Clearvista Parkway, Suite 550, 7:30 - 8:30 a.m.

### Community Hospital South

Third  
Wednesday South Multidisciplinary  
Breast Cancer Conference  
Community Breast Care Center South,  
533 E. County Line Rd., Ste. 101, 8:00 - 9:00 a.m.

For more information, contact Valerie Brown, (317) 355-5381.

## Indiana University School of Medicine/ Indiana University Health

### IU – Methodist – Riley

Oct. 19-20 Primary Care of Adolescents:  
Pearls, Perils and Pitfalls  
Indianapolis Marriott East, Indianapolis

Nov. 2-3 The Third Annual Eugene & Marilyn Glick  
Eye Institute Vision Symposium  
Eugene & Marilyn Glick Eye Institute, Indianapolis

Nov. 2-3 20th Annual Trauma/Surgical  
Critical Care Symposium  
University Place Conference Center, Indianapolis

Nov. 7 Pediatric Endocrinology  
Riley Outpatient Center, Indianapolis

2013  
Jan. 19 Review and Interpretation of the 2012 San Antonio  
Breast Cancer Symposium  
Indiana History Center, Indianapolis

Course dates and locations are subject to change. For more information, please visit <http://cme.medicine.iu.edu> or call 317-274-0104.

The Indiana University School of Medicine is accredited by the ACCME to provide continuing medical education for physicians.

We have more than 100 recurring meetings available. For a listing or more information, please visit <http://cme.medicine.iu.edu> or call 317-274-0104.

## 2012 Indiana Psychiatric Society Fall Symposium

Prescribing Controlled Medications for Risky Populations -  
When to Say YES!  
Accredited for 5.0 AMA PRA Category 1 Credits

Saturday, September 15, 2012  
JW Marriott - Indianapolis

While college campuses have long faced challenges of alcohol abuse and binge drinking, a new phenomenon is taking hold. The proliferation of prescription drug abuse among college-aged students is a frightening trend spreading across campuses nationwide. Statistics reported by SAMHSA estimate nearly one in four college students has illegally used prescription drugs for non-medical purposes. As these young adults grow and transition into "the real world" these "harmless" tendencies can develop into full blown addictions causing significant functional issues and exacerbating other psychiatric morbidities.

This symposium will explore college mental health, the increasing abuse of prescription drugs, and opiate use disorder. We will also explore adolescent versus adult ADHD, understanding when medications are appropriate. Our day will wrap up with a look at those drugs most likely to be diverted.

Speakers will present a balanced program of lectures and case scenarios to improve your understanding of these issues. Join us!

To learn more or register, visit [www.pdallc.com](http://www.pdallc.com) or email Sara at [lizgroup11@yahoo.com](mailto:lizgroup11@yahoo.com).

*Please submit articles, comments for publication,  
photographs, Bulletin Board items,  
CME and other information to  
[mhadley@imsonline.org](mailto:mhadley@imsonline.org)  
by the first of the month preceding publication.*

# IMS Events

## Indianapolis Medical Society

- August  
21 Executive Committee, Society, 6:00 pm, Sandwiches
- September  
12 Senior/Inactive Luncheon Meeting, Noon, Society, Speaker TBA  
14-16 ISMA CONVENTION, JW MARRIOTT HOTEL  
25 IMS Board, Society, 6:00 pm, Social; 6:30 pm, Dnr/Mtg
- October  
16 Executive Committee, Society, 6:00 pm, Sandwiches
- November  
4 IMS Advisory Breakfast, 7:30 am  
10-13 AMA House of Delegates, Honolulu, Hawaii  
20 ISMA Board of Trustees, 9:00 am, ISMA Headquarters
- December  
12 Senior/Inactive Luncheon Meeting, Noon, Society TBD  
18 Executive Committee Holiday Dinner, with Spouses/Guests

## Free Cessation Help for Your Patients

Two free tobacco cessation programs in Indiana work hand-in-hand to help patients stop using tobacco. The Indiana Tobacco Quitline (1-800-QuitNow) is a free, telephone-based, tobacco cessation program for all residents of Indiana, 18 years old and over. Specially trained Quit Coaches work with the user to develop an individualized quit plan. Patients can call 1-800-QuitNow directly or they may be referred via FAX by a health care provider who is a Preferred Provider within the Quit Now Network. A Preferred Provider receives:

- Fax Referral Privileges plus FAX forms; the initial call is made by a Quit Coach™ to the tobacco user.
- Status reports on fax referred patients: did the patient answer the Quitline call, enroll in the program and/or plan a quit date.
- Free Quitline literature for patient and provider use.

There is no charge for these services. To enroll as a Preferred Provider go to: <http://www.in.gov/quitline/2358.htm>. For more information, contact Lynne Arrowsmith, RRT, Tobacco Cessation Specialist, Marion County Public Health Dept. at 317-221-2084; [larrowsmith@hhcorp.org](mailto:larrowsmith@hhcorp.org).

Funding to the Tobacco Prevention and Cessation Commission at the Indiana State Department of Health comes from Indiana's portion of the 1998 Master Tobacco Settlement Agreement. In 1998, 46 states settled with several tobacco companies for misleading marketing claims and loss of life and medical expenses through Medicaid.

The Quitline provides an intensive counseling option not feasible in busy clinic environments. Counseling in combination with a FDA approved cessation medication creates the strongest chance of cessation success. TPC's cessation specialists provide additional advice and consultation.

## The Indiana Immunization Coalition

In partnership with the Indiana Immunization Coalition and supported by the National Office of Women's Health, the Indiana University Center of Excellence in Women's Health developed a series of webinars about cervical cancer directed at both providers and patients.

This webinar series has free CME and is open to all.

Human Papillomavirus (HPV) Vaccines <http://connect.iu.edu/p3a1ejb3fsz/>

Why Do I Need a Pap Smear? <http://connect.iu.edu/p9pialfge1/>

10 Reasons to Vaccinate Children against HPV Infection <http://connect.iu.edu/p9rzmcn4e8y/> Cervical Cancer Screening for the Rural, Underserved and Underinsured Patients <http://connect.iu.edu/p9u46pqqpib/>

Myths and Facts about the HPV Vaccine and the Prevention of Cervical Cancer <http://connect.iu.edu/p41bzum26xk/>

## Specialists in the Care of Adult and Childhood Spinal Diseases

THE  
S P I N E  
INSTITUTE



### Services:

The Spine Institute provides conservative and surgical care of adult and pediatric disorders.

The physicians offer expertise in all areas of Spine care including:

- Disc diseases, herniations and stenosis
- Scoliosis/Deformity – Adult & Pediatric
  - Spine fractures
  - Spine tumors
- Degenerative neck and back disorders
  - Revision surgery
  - Congenital disorders
  - Spinal cord stimulation
  - Workers' compensation

### Physician Referral:

When acute disorders require more aggressive approaches, or when recovery is extended and threatens to become chronic, The Spine Institute stands as a partner to physicians in providing specialized spine evaluations, surgical opinions and rehabilitation. Continuity of care is the goal of our practice and patients are returned to referring physicians with timely reports and full documentation.

**Philip Pryor, MD and James Hardacker, MD**  
**St. Vincent Carmel Medical Pavilion**

13431 Old Meridian Street  
2nd Floor, Suite 200,  
Carmel, Indiana 46032

**(317) 573-7733**

**[www.spineinstituteindy.com](http://www.spineinstituteindy.com)**

# President's Page ...

(continued from page 7)

alters the kinds of treatments patients receive near the end of life. Moreover, the POST could be used as a tool in the advance care planning process to facilitate conversations about a wider range of treatment decisions likely to arise in the final months of life, rather than narrowly focusing on resuscitation preferences at the time of death.

## Next Steps

The IPPC is working to find legislative solutions to these barriers and others and will provide suggestions for revised legislation with the goal of seeing a new POST bill successfully introduced in the 2013 legislative session. In anticipation of achieving this goal, the IPPC is busy creating educational materials and developing a coordinated implementation plan to help ensure a smooth and successful roll-out of the Indiana POST program.

For more information, contact Susan Hickman at [hickman@iupui.edu](mailto:hickman@iupui.edu) or Jerry Walthall at [gerald.walthall@franciscanalliance.org](mailto:gerald.walthall@franciscanalliance.org).

## References

<sup>1</sup>Hickman SE, Hammes BJ, Moss AH, Tolle SW. Hope for the future: Achieving the original intent of advance directives. *Hastings Center Rep* 2005;35(6):S26-S30.

<sup>2</sup>Hickman SE, Nelson CA, Moss A, et al. Use of the Physician Orders for Life-Sustaining Treatment (POLST) Paradigm Program in the Hospice Setting. *J Pall Med* 2009;12: 133-141.

<sup>3</sup>Hickman SE, Nelson CA, Perrin A, et al. A comparison of methods to communicate treatment preferences in nursing facilities: traditional practices versus the Physician Orders for Life-Sustaining Treatment (POLST) Program. *J Amer Geri Soc* 2010; 58: 1241-1248.

<sup>4</sup>Hickman SE, Nelson CA, Moss A, et al. The consistency between treatments provided to nursing facility residents and orders on the Physician Orders for Life-Sustaining Treatment (POLST) Form. *J Amer Geri Soc* 2011;59: 2091-2099.

## On a Personal Note:

I want to thank the members and leadership of the Indianapolis Medical Society for the honor of serving as your President. I have enjoyed the experience immensely and have tried to bring honesty, integrity and energy to this great organization.

I want to acknowledge, too, the many perspectives I have been able to share with you on the pages of the *Bulletin* from medical leaders throughout our community. The diversity, I hope, has proven to be thought-provoking.

Thanks to Beverly Hurt, EVP, and the staff of the IMS for keeping our organization moving forward.

IMS

## Staffing Needs?

**IMS Member Benefit –  
Favorite Healthcare Staffing**

[http://www.favoritestaffing.com/  
public/MedicalSocieties/Indianapolis/  
Indianapolis\\_index.aspx](http://www.favoritestaffing.com/public/MedicalSocieties/Indianapolis/Indianapolis_index.aspx)

## Did You Know?

**Email & Text Messages  
Are Not HIPAA Complaint?**

**Sign-Up Now for Your FREE  
DocBookMD Application  
for your iPhone, iPad,  
iPodTouch & Android Device.**

**DocBookMD is Your  
HIPAA Complaint  
Messenger!**

**A FREE  
IMS Member Benefit**  
*Courtesy of Capson Physicians Insurance*

## Advertisers' Index

<b>Circle of Friends.....</b>	<b>Praesentia LLC</b>
Advantage/Acumen .....	14
Center for Pain Management .....	10
Diamond Capital Management .....	17
DocBookMD .....	22
Franciscan St. Francis Heart Center .....	2
Franklin Home for Sale .....	17
Goodman Campbell Brain & Spine .....	15
I.C. System .....	12
ISMA Insurance Agency .....	19
JWM Neurology.....	13
Kindred Healthcare.....	23
The Marina Limited Partnership.....	3
Matt McLaughin, FC Tucker Co., Inc. ....	12
Midwest Pain & Spine .....	4
The National Bank of Indianapolis .....	19
Northwest Radiology Network.....	24
Practice Billing.....	12
ProAssurance Insurance .....	9
Star Financial Group.....	6
The Spine Institute.....	21
Superior Line4service .....	12
Urology of Indiana .....	11

# CONTINUE THE CARE

## DISCHARGED ISN'T THE LAST WORD. **RECOVERY** IS.

Kindred understands that when a patient is discharged from a traditional hospital they often need post-acute care to recover completely. Every day we help guide patients to the proper care setting in order to improve the quality and cost of patient care, and reduce re-hospitalization.



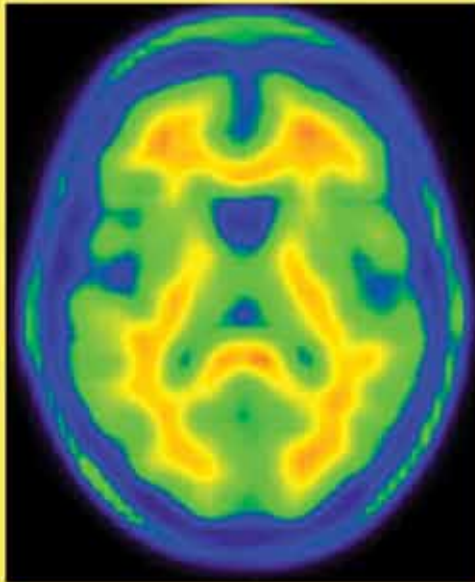
In the **Indianapolis** area Kindred offers services including aggressive, medically complex care, intensive care and short-term rehabilitation in: 2 Long-Term Acute Care Hospitals • 6 Transitional Care and Rehabilitation Centers • Homecare and Hospice

**Kindred**  
Healthcare  
Dedicated to Hope, Healing and Recovery

  [www.continuethecare.com](http://www.continuethecare.com)

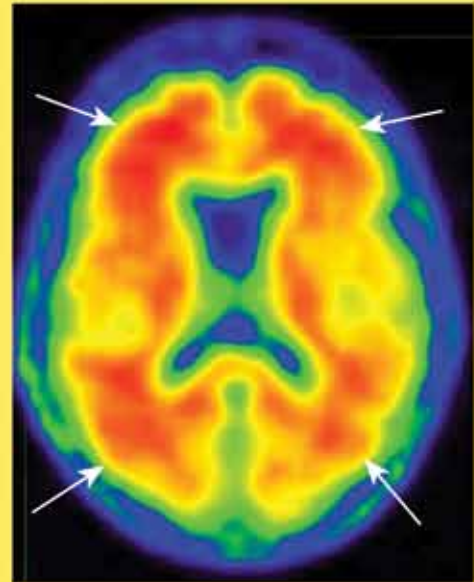
# ***Now Available In Indianapolis!***

## ***PET-CT Tracer to Help Diagnose Alzheimer's Disease ...and Memory Disturbances***



### **Negative Scan**

*A negative Amyvid scan indicates that a person has few or no amyloid plaques – consistent with no presence of Alzheimer's Disease.*



Arrows Indicate Amyloid Neuritic Plaques

### **Positive Scan**

*A positive scan indicates moderate to frequent amyloid plaques – consistent with a pathological diagnosis of AD. However, this amount of plaque can also present in other neurological conditions as well as in older adults with normal mental functioning.*

Through the joint efforts of Northwest Radiology and JWM Neurology, the first and only FDA-approved PET-CT tracer, Amyvid, is now available for use in testing patients being evaluated for Alzheimer's Disease and other causes of cognitive decline.

To schedule a scan or for more information, call 317-XRAY NOW (972-9669), or toll-free 800-400-9729.



Comprehensive Neurological Expertise  
Compassionate Patient Care

