

Volume XCVV • Number 1  
September 2013 • Indianapolis, Indiana

# Bulletin

**Mark M. Hamilton, MD  
2013-2014 President**

Presorted Std.  
U.S. Postage  
PAID  
Indianapolis, IN  
Permit 8365

Indianapolis Medical Society  
631 East New York Street  
Indianapolis, IN 46202-3706

# CENTER FOR SCAR THERAPY



## Advanced Treatment Options for Improving Complex Scars

Keloid

Atrophic

Contracture

Hypertrophic

Acne

Striae

Fibroblast Therapy

Laser Therapy

Injections

Surgical Scar Revision



Acne scar patient treated with multi-modality scar therapy.

# LUXURY LIVING ON THE LAKE

*At Home on the Water*

*Creating a lake living lifestyle—be part of it!*



## Waterfront Communities

If you are interested in living on the water, The Marina Limited Partnership has a host of options for you. With six distinctive communities on three Central Indiana lakes, we'll help you find the perfect waterfront, water access or off-water lot for your home. Special in-house lot financing is available in all of our communities.



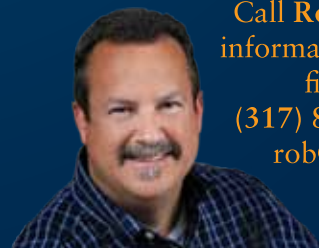
**ASK ABOUT SPECIAL IN-HOUSE LOT FINANCING**



The Marina Limited Partnership

[www.marinalimited.com](http://www.marinalimited.com)

Call Rob Bussell for lot information, pricing and financing options.  
(317) 845-0270 ext. 24  
rob@robbussell.com



# IT'S OUR PRIVILEGE TO SERVE YOU.

At the Indianapolis area's largest locally owned national bank, we believe in giving our clients the privileges they deserve. Privileges like exceptional personal service, in-depth knowledge, and timely responsiveness. Our private bankers make it a priority to meet your specific needs.

So please call Linda Allen at 261-0330 to set up an appointment today.

Because working with you is our privilege.



THE NATIONAL  
BANK *of* INDIANAPOLIS  
*Private Banking*

*Linda J. Allen*

Linda Allen  
Vice President, Private Banker

Official monthly publication of the  
Indianapolis Medical Society  
631 E. New York St.  
Indianapolis, Indiana 46202-3706  
Phone: (317) 639-3406  
Fax: (317) 262-5609  
Web Page: <http://www.imsonline.org>  
E-mail: [ims@imsonline.org](mailto:ims@imsonline.org)

Indianapolis Medical Society President  
Mark M. Hamilton, MD

President-Elect  
David R. Diaz, MD

Direct copy for publication and inquiries regarding advertising to:

Executive Vice President and  
Editor, *The IMS Bulletin*  
Beverly Hurt

Associate Editor, *The IMS Bulletin*  
Marcia K. Hadley

*The Bulletin* invites news from and about members of the Indianapolis Medical Society. Copy deadline: First of the month preceding month of publication.

**Advertising:** Rates available upon request. Advertisers should provide electronic files by the first of the month preceding publication. Placement of advertisements, except for premium spaces, will be throughout the publication at the discretion of the editor. Board Certification Policy: IMS publishes board certifications approved by the American Board of Medical Specialties, American Osteopathic Association, and Royal College of Surgeons. Physician members wishing to designate an area of special interest in which their boards are not ABMS-, AOA-, or RCS-approved may use the following wording: "Specializing in."

Statements and conclusions of authors that are published in *The Bulletin* are solely those of the authors and do not necessarily reflect Indianapolis Medical Society policy or position. The Indianapolis Medical Society makes no representation or warranty as to their accuracy or reliability. Advertisements published in *The Bulletin* do not imply approval or endorsement by the Indianapolis Medical Society, but represent solely the viewpoint of the advertiser or their agent.

### ATTENTION SOCIETY MEMBERS

We like to feature photographs or other artwork shared by IMS members on the cover of *The Bulletin*. Submit photographs, artwork, etc., to Beverly Hurt at the Society Office, [bhurt@imsonline.org](mailto:bhurt@imsonline.org).

*The Bulletin* is your magazine. Share your views by submitting reprints of your published articles; articles written expressly for *The Bulletin*; quips; short stories; brief comments; ideas; cartoons, etc.

Remember the *Indianapolis Medical Society Foundation* when planning your will. (Contribution form included in this issue.) Unless otherwise specified, your contribution will be directed toward medical scholarships.

*Bulletin* Subscriptions: \$36.00 per year  
AMA Web Page: <http://www.ama-assn.org>  
IMS Web Page: <http://www.imsonline.org>

# in this issue

## Special Features

President's Page

**Our Mission**

Mark M. Hamilton, MD..... 7

Guest Perspective

**What Did the Doctor Say?**

William R. Clark, Jr., MD, Editor,  
Fort Wayne Medical Society ..... 8

Recruit-a-Colleague Program..... 14

Project Health

**Thank you, Robert J. Goulet, Jr., MD**

Carrie Jackson Logsdon, Director ..... 16

Photo Gallery

**"Juleps in July"**

IMS & IUSM Women's Health ..... 22

In Summary ..... 24

## Departments

About Our Cover ..... 5

Advertisers' Index..... 24

Bulletin Board..... 11

Classified Advertising..... [www.imsonline.org](http://www.imsonline.org)

CME & Conferences..... 20

IMS Leadership ..... 18

In Memoriam..... 9

New Members ..... 12

## about our cover



On our cover:

Mark M. Hamilton, MD,  
IMS President 2013-2014.

Photography by Debbie Winchester.

*The IMS is planning more one hour seminars on practice enhancement issues for you soon. Watch the eBulletin, emails and faxes for more information.*



**FOR PHYSICIANS  
AFFILIATED WITH  
ST. VINCENT HEALTH**



# EXPECT MORE

The power of affiliation...

**Your record of practice is important for many reasons—credentialing, increasing transparency with patients, and protecting your important professional identity.**

**Coverage is about so much more than settling claims. Choose the protection that is like no other in supporting the principles of high reliability.**

Your Certitude™ program for medical professional liability insurance provides:

- Risk management resources to help you manage your practice and enhance patient safety
- Flexible premium payment options to fit your needs
- Physician peer input for difficult claims and underwriting issues
- A unified claims approach that helps you protect your important identity—with no claim settled without your consent
- Enhanced coverage for today's medical environment
- And much more...

Call ProAssurance at **800.284.7424** for more information on Certitude.





# President's Page Mark M. Hamilton, MD

***Our Mission:*** *“The mission of the Indianapolis Medical Society is to promote professional growth, advocacy for all physicians, and quality health care for the community!”*

It's a tumultuous time in the health care industry.

Delays in the implementation of the Affordable Care Act<sup>(1)</sup> and political pressure to delay the law's individual mandate<sup>(2)</sup> are fueling uncertainty among medical care providers, insurance companies and patients alike.

Despite these challenges, it remains our duty to continue to provide the best possible care to our patients. That's why this organization is so important. Since 1848, the Indianapolis Medical Society has been helping doctors better serve patients through a number of programs and initiatives designed to foster personal growth and build a sense of community among Central Indiana's health care providers.

As the new president of the IMS, I'd like to take this opportunity to thank you for your involvement, and for the opportunity to serve as your president. I'd also like to encourage you to not only remain an active member, but to talk to your colleagues and peers about joining us as well.

## **Making a Difference in Your Community**

One of the programs we're most proud to be involved with is Project Health. Project Health is a community partnership designed to improve access to health care for low-income, uninsured residents of Indianapolis.

It combines donated physician care, hospital services, help finding medication assistance, and case management in a manner that maximizes existing community resources and enhances coordination among service providers. Enabling patients to receive timely and appropriate care, Project Health aims to improve the health and well-being of community members, as well as, to produce cost savings for local medical institutions.

Through Project Health, you can help ensure patients get all of the care they need beyond the doctors' office; such as specialty care, labs, diagnostic tests, surgery, durable medical equipment and help obtaining medications. Right now, funding is critical for Project Health.

The program aims to help patients who fall through the gaps of the system – those who are not poor enough to qualify for other public programs, but who are uninsured and in need of care with nowhere else to go – particularly for specialty care.

In a future article we will spotlight Project Health and highlight the reasons its presence will still be critical even after the Affordable Care Act (Obamacare) is fully implemented.

## **Member Benefits**

Here is a quick reminder of the benefits that come with membership:

- FREE Physician Referral Service
- FREE Patient Inquiries about your educational background, training and board certifications

- FREE \$100,000 air travel insurance
- Exclusive Private Banking Services for you and your practice
  - FREE Medi-File Cards ... for your patients to keep a record of their medications
  - FREE first-time announcement labels to help you communicate changes in your practice
  - FREE annual *IMS Pictorial Roster of Members*
  - The largest discount in the country for ICD-10 Software from Complete Medical Solutions, LLC to help with your transition to ICD-10
    - Discount for subscribers of The Medical Society Exchange (the Society's wholly-owned medical answering service)
      - Discount on group health insurance through ADVANTAGE Health Solutions, a local health plan owned by local providers
      - 20% Discount with iSalus OfficeEMR®
      - Collection services through I.C. System
      - Staffing assistance through Favorite Healthcare Staffing, Inc. providing office staff, advanced practice, allied health, nursing and physicians
      - Discounts with Staples® & Hertz®
    - In addition to all of these benefits, IMS Members can also rent the Society's newly-renovated Conference Center for either their professional events or personal celebrations!

<http://imsonline.org/benefits.php>

Of course, membership comes with perks beyond just discounts and a great referral service. We're also focused on helping members develop leadership skills and foster community involvement while providing opportunities for professional growth and networking.

## **Developing Leadership**

- Serving on an IMS committee allows you to take an active role in the organization while making a difference in the professional lives of your colleagues, friends, and family in medicine without making a significant time commitment.
- Serving on an IMS committee will offer input about issues like medical and health care of the public, ethics and member benefits. You'll also have the opportunity to help develop the Society's educational and social programs and publications.

## **Advocacy For Physicians**

The Indianapolis Medical Society plays an active role in recruiting and selecting delegates for the ISMA Annual Convention. This is where your voice is heard (direction from the convention guides future legislative efforts of your

*Continued on page 26.*

# THE CARE YOU'VE BEEN WAITING FOR. WITHOUT THE WAIT.

The Carmel community now has quick, convenient access to the care we need. Franciscan St. Francis Health—Carmel offers a wide range of innovative outpatient and short-stay medical services under one roof, with ample, accessible parking.



**Franciscan**  
ST. FRANCIS HEALTH Carmel  
*Inspiring Health*

LAB & IMAGING • SURGERY • CARDIAC TESTING  
PHYSICAL THERAPY • ORTHOPEDICS • PRIMARY CARE  
COLORECTAL AND CANCER CARE  
INFUSION SERVICES • SLEEP DISORDERS

## Guest Perspective

William R. Clark, Jr., MD, Editor,

Fort Wayne Medical Society

### *What Did the Doctor Say?*

A cartoon from years back depicted a middle aged woman returning home to announce to her obese, unshaven, underwear clad husband sunk in a lounge chair before the TV with bottle of beer in hand: “The doctor said my *gall bladder isn't the problem; you are.*”

How many times each day is that question asked across our land? And how accurate are the answers? The marvels of American medicine are rightfully celebrated. Yet at the same time in the evolution of our health care delivery system, we are caught up in the growing pains.

Innovations in medical education coupled with advances in diagnosis and treatment places patients in an enviable position compared to a generation ago. However, the cautionary message of this brief writing simply put is: In our current state of refinement, communication can be the system's Achilles heel.

What we say to one another, when we say it, and how we say it is the platform upon which rests all of what goes on in the daily practice of medicine.

As pointed out by Medical Society colleague Andy O'Shaughnessy several *Quarterly* issues back, twenty-first century technology opens wide a new door for effective exchange of information in our fast paced, tightly scheduled, multifaceted society; but passing through that door to the other side has proven difficult.

The promise of a better day comes with heavy baggage. The burdens of systems compatibility, system user friendliness, expense, staff education, and record documentation, along with the challenges of ever changing HIPAA regulations, multi-site origins of patient data, the “third person in the room” phenomenon, and the emergence of increasing support for direct patient access to their medical records are well known to readers of the *Quarterly*.

Quotes from recent press reports include: “Study shows patient safety at U.S. hospitals hampered by inadequate teamwork and communication as well as a negative culture,” “hospitalized patients too often have no single physician in charge,” “EHR systems are not yet optimized to the end users' needs,” “the health IT systems that dominate the market are not designed to talk to each other,” “the technology to make some

*Continued on page 17.*



# In Memoriam



**Anastacio Chan Ng, MD**  
1933 - 2013

Anastacio Chan Ng, MD, 80, died at home on July 14, 2013. He was born April 15, 1933 in Manila, Philippines.

Dr. Ng graduated cum laude from the University of Santo Tomas in Manila earning both his undergraduate and medical degrees.

Dr. Ng immigrated to the United States to continue his medical training in 1958. He interned at Mercy Hospital, Buffalo, New York, completed his residency in radiology at Cook County Hospital, Chicago, Illinois and completed his training in radiology at the Mallinckrodt Institute of Radiology at Washington University in St. Louis.

Dr. Ng joined the medical staff at Regina General Hospital in Regina, Saskatchewan, Canada, where he attended 1964 - 1968. He returned to the United States to join the medical faculty at Indiana University Hospital where he was an Assistant Professor of Medicine. He was a member of the American Board of Radiology, Radiological Society of North America, Royal College of Physicians and Surgeons of Canada and the Canadian Association of Radiologists.

Dr. Ng moved on to help establish the Radiologic Specialists of Indiana at Methodist Hospital in Indianapolis in 1970, where he enjoyed a long and vibrant career, retiring in 2007.



**Robert Winston Mouser, MD**  
1931 - 2013

Dr. Robert W. Mouser 81, passed away on July 22nd, 2013. He was born on October 21, 1931 in Indianapolis.

Dr. Mouser lived a remarkable life of service to his country, his patients and his community. He had an undeniable passion for medicine and learning.

Dr. Mouser graduated from Shortridge High School and received degrees from the Seminary of Laval University in Quebec, Wabash College, Indiana University, and Indiana University School of Medicine. He was one of the youngest medical doctors at that time, graduating from medical school at the age of 22.

Dr. Mouser established his private Family Medicine practice in Broad Ripple in 1957, later serving his patients as Broad Ripple Family Physicians and Cornerstone Family Physicians. He was devoted to many generations of patients for over 50 years. He was a fellow of the American Academy of Family Physicians, past President of the Indiana Academy of Family Physicians and past President of the Indianapolis and Indiana Diabetes Associations. He was a former clinical instructor in Family Practice for Indiana University School of Medicine.

In 2004, Dr. Mouser was appointed 'One of America's Top Doctors.' He was also very proud of his years as a staff physician at the Indianapolis Motor Speedway, 1954-1982, where he contributed ideas benefiting safety in auto racing and was a member of the Indianapolis 500 Old Timers Club. He was also a medical investigative researcher in the development of Gatorade for its use prior to marketing.

Dr. Robert Mouser had a distinguished military service, serving as Commanding Officer of Medical Air Evacuation in Japan 1955-57, as well as many years as an Air Force reservist.

Dr. Mouser served the IMS in many capacities over the years. He was Secretary/Treasurer (1988-1989); a member of the Board of Directors (1964-1967, 1988-1995) serving as Vice Chairman 1966-1967; Delegate to the State Convention 1977-1980, 1983-1991; Alternate Delegate 1964-1967, 1976-1979, 1980-1983, 1992-1995; IMS Executive Committee 1988-1989; Articles & By-Laws Committee 1974-1975; and Medical Society Exchange Board from 1989 until 1996.

Expert investment management  
for portfolios of \$500,000 or more.

  
**DIAMOND**<sup>®</sup>  
CAPITAL MANAGEMENT

317-261-1900 ♦ [www.dmdcap.com](http://www.dmdcap.com)

Not FDIC Insured ♦ No Bank Guarantee ♦ May Lose Value ♦ © 2013 Diamond Capital Management



*From left to right: Sandra Dolny, PA-C; Jocelyn Bush, MD; Edward Kowlowitz, MD; John Fitzgerald, MD; Alina M. Clavijo-Passik, PhD  
Board-Certified Pain Management Specialists*

## We get your patients back to life.

The Center for Pain Management is one of Central Indiana's most experienced medical practices focusing exclusively on treating patients who suffer from back, head, neck, joint or cancer-related pain.

This includes:

- Acute injuries or treatment
- Spinal injuries
- Herniated discs
- Arthritis
- Failed back surgery
- Chronic pain
- Migraines
- Fibromyalgia
- Complex regional pain syndrome (RSD)

Our team of clinicians and board-certified physicians specializes in comprehensive evidence-based diagnostic and multi-disciplinary treatment modalities that include:

- Interventional procedures
- Physical therapy
- Medication management
- Spinal cord stimulation
- Psychological counseling
- Ketamine and lidocaine infusions

CENTER FOR

**PAIN  
MANAGEMENT**

**317.706.PAIN**  
317.706.7246

8805 N. Meridian St.  
Indianapolis, IN 46260

[www.IndyPain.com](http://www.IndyPain.com)

Physician referrals and patient self-referrals are accepted. Workers compensation related injuries welcome.

# Bulletin Board

**Richard D. Feldman, MD**, received the Lester D. Bibler Award from the Indiana Academy of Family Physicians (IAFP) in July 2013.

Dr. Feldman, director of the Family Medicine Residency Program for Franciscan St. Francis Health, was presented the award at IAFP's annual conference in downtown Indianapolis.

The award recognizes individuals for their contributions and long-time dedication to family medicine. It was established in honor of Lester D. Bibler, MD, who was instrumental in helping found the American Academy of Family Physicians (formerly American Academy of General Practice) and served as the first president of the Indiana Academy of Family Physicians.

Dr. Feldman, who directs the medical education program at Franciscan St. Francis, holds several elected appointments with the Indiana Academy of Family Physicians, the Indianapolis Medical Society and Indiana State Medical Association. He has served as president of the Indiana Academy of Family Physicians IAFP's Foundation and is past president of the Indiana Medical History Museum.

A South Bend native, Feldman served as Indiana State Health Commissioner from 1997 to 2001, and he's a regularly featured editorial columnist for the *Indianapolis Star*.

**Anthony W. Mimms, MD**, is now the Medical Director of Acute Rehab at Community Westview Hospital.

**Joshua S. Neucks, MD**, has joined JWM Neurology.

Dr. Neucks is a neurologist and received his medical degree from Indiana University School of Medicine in Indianapolis where he also completed his Neurology Residency, serving as Chief Resident. He has two master's degrees, including a Master of Science in Cellular and Integrative Physiology from the IU School of Medicine. Dr. Neucks sees patients with all types of neurology conditions.

**Vincent P. Mathews, MD**, President and CEO of Northwest Radiology Network, PC, presented 'Advances in Imaging of Dementia' at the recent Indiana Academy of Family Physicians Annual Convention held at the Downtown Westin in Indianapolis in July. He discussed Beta-amyloid PET-CT imaging and its role in the diagnosis of Alzheimer disease, and how the newly approved Beta-amyloid PET-CT imaging technology can improve patient care.

**Michael L. Boothe, MD**, of Southside OBGYN moved his practice from South Emerson Avenue to Franciscan St. Francis Health-Mooresville. He joins Southside OBGYN office at the Mooresville hospital's Women's Center.

A native of El Paso, Texas, Dr. Boothe received his undergraduate degree at the University of Texas and earned his medical degree at Universidad Autonoma de Juarez (Mexico). He completed his residency in obstetrics and gynecology at Methodist Hospital in Indianapolis.

Dr. Boothe volunteers annually for medical mission trips to Haiti and Honduras.

**Michael H. Fritsch, MD**, Professor, practicing Otolaryngology-Neurotology, received the top ranking of referenced peer-



Dana N.  
Bonaminio, MD



Michael L.  
Boothe, MD



Richard D.  
Feldman, MD



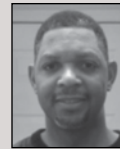
Michael H.  
Fritsch, MD



Dean D.T.  
Maglinte, MD



Vincent P.  
Mathews, MD



Anthony W.  
Mimms, MD



Joshua S.  
Neucks, MD



Kumaresan  
Sandrasegaran, MD

reviewed journal articles for the last year in otologic cosmetic surgery for his article in German (with English translation) "Anlegen des Cavum conchae ohne Hautschnitt" (Incisionless otoplasty with conchal bowl recession).

*News from Indiana University School of Medicine, Department of Radiology & Imaging Sciences...*

**Dean D.T. Maglinte, MD**, Distinguished Professor of Radiology and Imaging Sciences, moderated a small bowel session and presented "Update on Small Bowel Neoplasms" at the 2013 European Society of Gastrointestinal and Abdominal Radiologists (ESGAR) held in Barcelona, Spain, June 4-7. He also co-presented electronic posters entitled "Functional Pelvic Floor Imaging: How to Do It and Report It" and "CT Enterography and CT Enteroclysis: Is There a Difference?" Dr. Maglinte is ESGAR Honorary Fellow and U.S. National Representative to the society.

**Kumaresan Sandrasegaran, MD**, Associate Professor of Radiology, was elected Director of Categorical Course for American Roentgen Ray Society Annual Meeting 2014. He was also recently invited to speak at the UCSF Abdominal Course, Breckenridge Educational Symposium on Abdominal Imaging, Indian Radiological and Imaging Association, American Roentgen Ray Society and Society of Abdominal Radiologists.

**Dana N. Bonaminio, MD**, fourth year resident, won second place for her electronic/poster presentation "Is Morphine Augmented HIDA Scan Still Accurate for Diagnosing Acute Cholecystitis in the Era of CT and Ultrasound?" at the 2013 Campbell-Klatte Annual Oratorion.

Dr. Bonaminio's breast case was recently selected by American Institute for Radiologic Pathology (case ID #4481; large phylloides tumor) for online publication.

IMS

# New Members

## Blaney, Philip A., MD

Resident – Franciscan St. Francis Health  
5230 E. Stop 11 Rd., #250A  
46237-6398  
Ofc – 528-8921  
Fax – 528-6916  
Family Medicine  
University of Utah, 2012

## Brentrup, Christine A., MD

Resident – Franciscan St. Francis Health  
5230 E. Stop 11 Rd., #250A  
46237-6398  
Ofc – 528-8921  
Fax – 528-6916  
Family Medicine  
University of North Dakota, 2013

## David Capes, Cecilia M., MD

Resident – Franciscan St. Francis Health  
5230 E. Stop 11 Rd., #250A  
46237-6398  
Ofc – 528-8921  
Fax – 528-6916  
Family Medicine  
American University of the Caribbean,  
Montserrat, 2012

## Hale, Amy B., MD

Resident – Franciscan St. Francis Health  
5230 E. Stop 11 Rd., #250A  
46237-6398  
Ofc – 528-8921  
Fax – 528-6916  
Family Medicine  
Indiana University, 2013



## Kinsella, Charles E.N., MD Reactivation

Franciscan Physician Network  
Pulmonary & Sleep Specialists  
1040 Greenwood Springs Blvd.  
Greenwood, 46143-7975

Ofc – 893-0888\*  
Fax – 893-0815  
Internal Medicine, 1990, 2012  
Pulmonary Disease, 1992, 2012  
Critical Care Medicine (IM), 1995, 2005  
Sleep Medicine (IM), 2009  
St. Louis University, 1987

## Matthews, David A., MD

Resident – IU School of Medicine  
Diagnostic Radiology  
University of South Carolina, 2010

## Mooney, Michael J., MD

Resident – Franciscan St. Francis Health  
5230 E. Stop 11 Rd., #250A  
46237-6398  
Ofc – 528-8921  
Fax – 528-6916  
Family Medicine  
Indiana University, 2013

## Siegel, Zachary T., MD

Resident – IU School of Medicine  
Physical Medicine & Rehabilitation  
Indiana University, 2010

## Smith, Kami L., MD

Resident – Franciscan St. Francis Health  
5230 E. Stop 11 Rd., #250A  
46237-6398  
Ofc – 528-8921  
Fax – 528-6916  
Family Medicine  
Indiana University, 2013

## Szotek, Paul P., MD

IU Health Physicians General Surgery  
1801 N. Senate Blvd., #635  
46202-1259  
Ofc – 963-1400  
Fax – 963-1453  
Email – pszotek@iuhealth.org  
Web – www.iuhealth.org  
Surgery, 2013  
Indiana University, 2002

## Vardas, Panayotis, MD

Resident – IU School of Medicine  
Thoracic Surgery  
General Surgery  
Sapienza University of Rome,  
Italy, 2006

## Zabel, Anthony R., MD

Resident – Franciscan St. Francis Health  
5230 E. Stop 11 Rd., #250A  
46237-6398  
Ofc – 528-8921  
Fax – 528-6916  
Family Medicine  
Indiana University, 2013



## Zeller, Charles J., DO

Otolaryngology Associates  
5508 E. 16th St., #C 14  
46218-4931  
Ofc – 355-2960  
Email – czeller@otolaryn.com

Web – www.otolaryn.com  
Otolaryngology  
Head & Neck Surgery  
Facial Plastic Surgery  
Ohio University College of  
Osteopathic Medicine, 1998

**Recruit-a-Colleague  
Program!  
See the Center Spread  
for details or  
visit [imsonline.org](http://imsonline.org)  
or phone 639-3406.  
Membership in the IMS  
provides**

- collegiality
- support
- strength  
and discounts!

## IMS Membership

The IMS is a linked with the Indiana State Medical Association and the American Medical Association with AMA membership remaining optional. Your IMS Membership includes these benefits (for a complete list, call 639-3406 or visit [www.imsonline.org](http://www.imsonline.org)):

- Representation and advocacy at all meetings of the AMA and ISMA House of Delegates making sure your voice is heard
  - Liaisons with civic, governmental, health and hospital organizations, the public and the media
  - FREE Patient Referrals
  - FREE \$100,000 air travel insurance for all Members
  - Annual 7th District Meeting ... providing physicians and their families in Hendricks, Johnson, Marion and Morgan Counties the opportunity to meet and elect representatives at a family-oriented event
  - Advantage Health Solutions - IMS offers its Members a discount on group health insurance through a local provider-owned health plan.
  - DocBookMD - By partnering with DocBookMD, IMS is able to offer Members a next-generation HIPAA compliant multi-media communication tool.
  - iSALUS - 20% Discount on or part of OfficeEMR™ from iSALUS for the first year. OfficeEMR™ is a fully-integrated medical records system for solo practitioners, groups and large medical organizations
  - Favorite Healthcare Staffing - As the exclusive provider of staffing services for the IMS, Members can enjoy Favorite's preferred pricing on a full-range of recruitment and staffing services
  - Staples - Exclusive discounts ... for your practice, home office and home. Call the IMS at (317) 639-3406 to set-up your access.
  - Hertz - Special year-round discounts on your daily, weekly, weekend, and monthly rentals.
  - ICD-10, CPR: For less than the cost of a code book, CPR's Simple Solutions ICD-10 Transition Software is being called a "must have" training resource for the outpatient, ambulatory ICD-10-CM transition. IMS has secured a special price for our Members. For ICD-10 orders and questions, contact: [cptcdpros.com/ims](http://cptcdpros.com/ims).
  - ProAssurance: Five percent premium credit offered to IMS/ISMA Members with medical professional liability insurance through ProAssurance can provide you with substantial savings depending on your specialty.\*
- \*Premium savings will vary depending on your territory, specialty and any additional premium credits that may apply.
- I. C. System - We have partnered with America's largest privately owned debt collection agency since 1993. Please visit [www.icmemberbenefits.com](http://www.icmemberbenefits.com) or call 800-279-3511.
  - Free Notary Service!
  - The IMS provides more than 50 special benefits to Members!

# Simple Spine Surgery?

*There's no such thing.*

And yet, we hear it time and time again: I send my "simple spine" one place but my complex cases go to a neurosurgeon.

Every spine surgery involves carefully working around delicate, inflamed nerves. When nerves are involved, a "simple spine" case can turn complex quickly.

Only neurosurgeons have the advanced training to effectively treat these fragile structures that are the root of your patient's pain.

Simple spine. Complex spine. Choose Goodman Campbell Brain and Spine for all your spine patient needs. We are your nervous system specialists, with nearly 30 neurosurgeons and 3 fellowship-trained interventional pain physicians to give your patients the most options for pain relief.

Use our secure online referral form at: [goodmancampbell.com/referrals](http://goodmancampbell.com/referrals). Or call (317) 396-1199 or toll free (888) 225-5464.



**GOODMAN CAMPBELL**  
BRAIN AND SPINE

*The nervous system specialists*

*Private practice and academic neurosurgeons,  
collaborating for the good of patients*

## Neurosurgeons

Nicholas Barbaro, MD  
Jamie Bradbury, MD  
Aaron Cohen-Gadol, MD  
Jeffrey Crecelius, MD  
Henry Feuer, MD  
Daniel Fulkerson, MD  
Randy Gehring, MD  
Peter Gianaris, MD  
Eric Horn, MD, PhD  
Steven James, MD  
Saad Khairi, MD  
Thomas Leipzig, MD  
Shannon McCanna, MD  
James Miller, MD  
Jean-Pierre Mobasser, MD  
Troy Payner, MD  
Eric Potts, MD  
Michael Pritz, MD, PhD  
Richard B. Rodgers, MD  
Carl Sartorius, MD  
Mitesh Shah, MD, FACS  
Scott Shapiro, MD, FACS  
Michael Turner, MD  
Thomas Witt, MD  
Robert Worth MD, PhD  
Ronald L. Young, II, MD

## Pediatric Neurosurgeons

Laurie Ackerman, MD  
Joel Boaz, MD  
Daniel Fulkerson, MD  
Jodi Smith, PhD, MD  
Michael Turner, MD  
Ronald L. Young, II, MD

## Interventional Neuroradiology

Andrew DeNardo, MD  
Daniel Hsu, MD  
John Scott, MD

## Physical Medicine and Rehabilitation

Amy Leland, MD  
Nancy Lipson, MD

## Interventional Pain Management

Christopher Doran, MD  
Jose Vitto, MD  
Derron Wilson, MD

## Neuropsychology

Donald Layton, PhD

# Recruit-a-Colle

Help strengthen the voice of medicine in Central Indiana -- recommend Indianapolis Medical Society Membership to your colleagues! Visit [IMSONLINE.ORG](http://IMSONLINE.ORG) for Recruiting and Membership applications.

The need for a strong voice to speak on behalf of medicine and, in particular, physicians has never been greater than it is today. It is critically important that we unify to address the specific needs of medicine in the greater Indianapolis area. There are advocacy efforts to champion, practice management issues to simplify, collegiality to build, and a time-honored profession to foster. There is strength in numbers. Together, we can make a positive change for medicine in Central Indiana.

**Ask your colleagues to join IMS today. To thank you for your time and effort, we offer the following recruitment program:**

**Between July 1 and December 15, 2013, if you recruit one colleague you will receive 1/2 off your 2014 IMS annual dues.**

**Plus for every Member recruited by you within the promotional period, you will receive an entry in a grand-prize drawing for an iPad or iPhone ... just for you.**

**New recruits will be entered into a drawing for an iPad ... just for them, with your compliments!**

**To be considered a “recruited” Member, your colleague must:**

- Be a nonmember who is eligible for the “full” IMS Member category and pay \$100 or more in dues.
- Submit a Membership application, along with his or her dues payment, between July 1, 2013 and December 15, 2013.
- Write **your name** in the **recruiter box** on the top of the Membership application.\*\*

Send a recruitment email (copy on reverse side) to a colleague today, or link them to the online Membership application at [imsonline.org](http://imsonline.org) to personally deliver your invitation.

You may also request a Membership Inquiry Kit from the IMS Membership Secretary 317-639-3406, (M-F 9 a.m. - 4 p.m. ET).

**It is the collective effort that makes a difference. Call on the support of your colleagues today.**

This program is only valid for IMS members whose dues are paid for the current fiscal year.

\*Please note that total dues credits earned in one yearly period cannot be greater than the amount of any recruiter’s IMS annual dues.

\*\* You can also receive credit for recruiting former Members and Fellows. If a former Member or Fellow calls the Membership Department to apply, be sure to ask them to mention you as the recruiter.



# League Program

Email Your Message:

I'm writing to encourage you to consider becoming a member of the Indianapolis Medical Society

With 1,800 members, IMS is the largest county medical society in Indiana, dedicated to improving medicine for patients and supporting those who practice it.

Membership in IMS provides such benefits: Free DocBookMD; special offers for ICD-10 software; discounts from ProAssurance, iSALUS, Staples, Favorite Healthcare Staffing; along with free referrals, labels, travel insurance and much, much more.

*Personalize your message in the space provided online. For instance, tell your colleague about a specific IMS membership benefit you enjoy.*

**Recruit-a-Colleague email copy and online application available at: [imsonline.org](http://imsonline.org)**

**Recruit-a-Colleague: Recommend IMS Membership**

**Note:** Fields marked with \* are required.

\* Your Name: \_\_\_\_\_

\* From (Your email address): \_\_\_\_\_

Subject line: Consider IMS Membership

\* Your colleague's name: First: \_\_\_\_\_ Last: \_\_\_\_\_

\*To (Your colleague's email address): \_\_\_\_\_

I'm an IMS Member because: \_\_\_\_\_

\*IMS Recruiter \_\_\_\_\_



---

**[ims@imsonline.org](mailto:ims@imsonline.org)**

---





# Project Health



Carrie Jackson Logsdon, Director

## Thank you, Robert J. Goulet, Jr., MD



Robert J. Goulet, Jr., MD, Medical Director of Community Physician Network Breast Care is Project Health's Doctor of the Month for September. He and his sister were born in New York City and spent their childhood in the Bronx where his father had a carpentry business with help from his mother in running the business. He attended high


school on Long Island and graduated from St. John's University with a Bachelor of Science degree, but he says he knew he wanted to be a doctor in the 6<sup>th</sup> grade. "I was always intrigued with medicine and started working as an orderly when I was a sophomore in high school working my way up to ER orderly. As an undergrad I ran dialysis machines and did private duty male nursing."

Dr. Goulet attended the SUNY College of Medicine in Brooklyn, New York and completed his internship and residency in general surgery at Kings County Hospital, as well as a Fellowship in Surgical Research at University Hospital all in Brooklyn. Dr. Goulet is board certified in general surgery from the American College of Surgeons and is a member of the American Medical Association, the Society of Surgical Oncology, National Consortium of Breast Centers, American College of Physician Executives, American Society of Breast Surgeons, American Society of Clinical Oncology, the Hoosier Oncology Group, on the Board of Directors of the Susan G. Komen Foundation of Central Indiana and is State Chairman on the Committee on Cancer for the American Cancer Society. Among his many honors, Dr. Goulet was awarded a Sagamore of the Wabash from Governor Joe Kernan. But the award he reveres the most is the Lawrence Einhorn Award from the Little Red Door Cancer Agency. "I had the privilege of working with Dr. Einhorn when I joined the faculty of the Indiana University

School of Medicine. We worked on patients with metastatic testicular cancer and became good friends. Then when the Simon Cancer Center opened we were office neighbors for over a decade. He was a trusted mentor and is a dear friend." Dr. Goulet adds, "Few have the grace, humility, dignity and intelligence that he has, and to have received the award bearing his name means a great deal to me."

Dr. Goulet says he had the good fortune to always meet the right people at the right time. It was 1986 when Jay Grosfeld, MD, lured him to Indianapolis. "He was a great mentor for me when I was a junior faculty person and Assistant Professor of Surgery. I was leaning toward general oncology of the liver, colon and breast. Then in 1990 George Sledge and Stuart Kleit approached me for the I. U. Breast Care and Research Center and the rest is history."

Dr. Goulet is married to Barbara Wolf, PhD, who just retired as Vice President of Family Learning Assessment at the Children's Museum. He has two daughters and two sons, four grandchildren and another on the way. One son lives in Cincinnati and the others are all here in Indianapolis. He and Barbara share a love for gardening, landscaping, reading, bicycling and hanging out with the grand-kids. They have a cottage in Michigan where they "escape to recharge their batteries, along with kayaking and fishing." He is also an accomplished artist whose works grace the walls of his offices at Community Hospital East.

Dr. Goulet says that volunteering for Project Health is an opportunity for everyone to give back. "You always get much, much more than you give and there is tremendous satisfaction of doing what we all got into this to begin with. There are a lot of folks who really need help that we can so easily give." Johann Wolfgang von Goethe wrote that "kindness is the golden chain by which a community is bound together." Thank you, Dr. Goulet, for being part of that chain. 

### Yes! I want to Help IMSF - Project Health

#### Enclosed is My 100% Tax-Deductible Contribution:

- Check (payable to **Indianapolis Medical Society Foundation**)     Credit Card (Visa, MasterCard, AMEX)
- Online at [imsonline.org](http://imsonline.org)     \$100     \$500     \$1,000     \$\_\_\_\_\_

Name: \_\_\_\_\_

Address: \_\_\_\_\_

City: \_\_\_\_\_ State: \_\_\_\_\_ Zip: \_\_\_\_\_

Phone: \_\_\_\_\_ Fax: \_\_\_\_\_

Credit Card: \_\_\_\_\_ Expiration Date: \_\_\_\_\_ Security Code: \_\_\_\_\_

Email: \_\_\_\_\_ Contribution Honors: \_\_\_\_\_

Indianapolis Medical Society Foundation • 631 E. New York St., Indianapolis, IN 46202-3706  
Phone: 317-639-3406 Fax: (317) 262-5609 [www.imsonline.org](http://www.imsonline.org) [ims@imsonline.org](mailto:ims@imsonline.org)



# Guest Perspective –

(Continued from page 8)

parts of a patient's file visible only to some users and not others isn't widely available." At the same time, malpractice insurers warn of the pitfalls surrounding "hand offs" and lack of real time discharge or transfer summaries.

It appears that getting to the new age of communication in health care delivery will require patience and cooperation on the part of all participants. Advocacy by physicians for quality care and patient safety will be one driver, as is the linkage of IT systems and the EHR to reimbursement by payers.

The take home message: the power of the evolving new capacity for information exchange is an enormous adjunct to the practice of medicine, but not a substitute for health care professionals' inbred commitment to "talk" with one another and their patients.

*Reprinted with permission of the author and the Fort Wayne Medicine Quarterly, Summer 2013, Volume 11, Issue 2. Official Publication of the Fort Wayne (IN) Medical Society.*

IMS



### Indiana's Medical Staffing Experts!

Favorite Healthcare Staffing is honored to be the Exclusive Provider of Staffing Services for the Indianapolis Medical Society. Serving the Indiana healthcare community since 1981, Favorite continues to set the standard for quality, service, and integrity in healthcare staffing.

With preferred member pricing, Favorite's comprehensive range of staffing services can help physicians improve cost control, increase efficiency, and protect their revenue cycle.

**Discover The Favorite Advantage!**  
317-548-5322

**STAFFING PROFESSIONAL SPECIALTIES**

- Physician Office Staff
- Practice Managers
- Front & Back Office
- Nursing
- Allied Health
- Advanced Practice - Nurse Practitioners - Physician Assistants
- Physicians

MedicalStaffing@FavoriteStaffing.com      317-548-5322

CONTRACT PLACEMENT • DIRECT HIRE • TEMP-TO-PERM • PER DIEM

**Preferred Pricing for IMS Members**

Favorite Healthcare Staffing is the Exclusive Provider of Staffing Services for the Indianapolis Medical Society



**Quality Staffing with Exceptional Results!**  
MEDICALSTAFFING@FAVORITESTAFFING.COM

# JOINED AT THE HIP, YOU MIGHT SAY.



Chris and Gail are about as close as two sisters can be. So close, in fact, that when they both needed hip replacements, they had the surgeries performed at Franciscan St. Francis Health – on the same day. The Center for Hip & Knee Surgery at Franciscan St. Francis Health – Mooresville has been honored with the Outstanding Patient Experience Award and ranked among the Top 5% in the nation by Healthgrades® for five years straight. Chris and Gail certainly agree with that assessment, now that they can look forward once again to enjoying their walks – together.



For more information, or to register for our free joint replacement seminar, visit [CenterForHipandKneeSurgery.org](http://CenterForHipandKneeSurgery.org).



**Franciscan ST. FRANCIS HEALTH**  
CENTER FOR HIP & KNEE SURGERY  
Inspiring Health



# Indianapolis Medical Society

631 East New York Street • Indianapolis, IN 46202-3706

Phone: (317) 639-3406 • Fax: (317) 262-5609 • E-Mail: [ims@imsonline.org](mailto:ims@imsonline.org) • Web: [www.imsonline.org](http://www.imsonline.org)

## Officers 2013-2014

Mark M. Hamilton .....President  
Bruce N. Goens ..... Immediate Past President

David R. Diaz..... President-Elect  
David H. Moore..... Secretary/Treasurer

## Board of Directors 2012-2013

*Terms End with Year in Parentheses*

David R. Diaz, Chair (2014); Stephen W. Perkins, Vice-Chair (2015)

Linda Feiwell Abels (2013)  
Richard D. Feldman (2013)  
Ronda A. Hamaker (2013)  
Stephen R. Klapper (2013)  
John P. McGoff (2013)  
J. Mark Michael (2013)  
David H. Moore (2013)  
Barbara K. Siwy (2013)  
Michael T. Stack (2013)  
Tim E. Taber (2013)  
John J. Wernert (2013)

Christopher D. Bojrab (2014)  
Marc E. Duerden (2014)  
John C. Ellis (2014)  
Bernard J. Emkes (2014)  
Paula A. Hall (2014)  
Gerald T. Keener, Jr. (2014)  
John C. Kincaid (2014)  
John E. Krol (2014)  
Gregory N. Larkin (2014)  
Susan K. Maisel (2014)  
John F. Schaefer, Jr. (2014)

Mary D. Bush (2015)  
Robert J. Goulet, Jr. (2015)  
David C. Hall (2015)  
Marc R. Kappelman (2015)  
Jeffrey J. Kellams (2015)  
Anthony W. Mimms (2015)  
Caryn M. Vogel (2015)

\*Appointed from the President's Advisory Council  
Carolyn A. Cunningham  
Heidi M. Dunniway  
Jon D. Marhenke

## Delegates to the State Convention, September 20-22, 2013, JW Marriott

*The year shown in parentheses indicates year in which the term expires following the conclusion of the ISMA Annual Convention.*

Anne C. Clark (2013)  
Steven A. Clark (2013)  
Carolyn A. Cunningham (2013)  
David C. Hall (2013)  
Ronda A. Hamaker (2013)  
Stephen R. Klapper (2013)  
Peter M. Knapp, Jr. (2013)  
Susan K. Maisel (2013)  
David M. Mandelbaum (2013)  
John P. McGoff (2013)  
Tim E. Taber (2013)

Mary D. Bush (2014)  
David R. Diaz (2014)  
Gary R. Fisch (2014)  
Jonathan A. Fisch (2014)  
Bruce M. Goens (2014)  
Ann Marie Hake (2014)  
Robert M. Hurwitz (2014)  
Paul D. Isenberg (2014)  
David A. Josephson (2014)  
Marc R. Kappelman (2014)  
Randall A. Lee (2014)  
Mary Ian McAteer (2014)  
Clement J. McDonald III (2014)  
Richard H. Rhodes (2014)  
Jodi L. Smith (2014)

Linda Feiwell Abels (2015)  
Christopher D. Bojrab (2015)  
Charles W. Coats (2015)  
John C. Ellis (2015)  
Robert J. Goulet, Jr. (2015)  
C. William Hanke (2015)  
Gerald T. Keener, Jr. (2015)  
David H. Moore (2015)  
Robert B. Pauszek, Jr. (2015)  
J. Scott Pittman (2015)  
John F. Schaefer, Jr. (2015)  
Caryn M. Vogel (2015)

## Alternate Delegates to the State Convention, September 20-22, 2013, JW Marriott

*The year shown in parentheses indicates year in which the term expires following the conclusion of the ISMA Annual Convention.*

Robert J. Alonso (2013)  
David S. Batt (2013)  
Daniel J. Beckman (2013)  
Craig S. Cieciora (2013)  
Marc E. Duerden (2013)  
Brian W. Haag (2013)  
Mark M. Hamilton (2013)  
Andrew A. Johnstone (2013)  
Jeffrey J. Kellams (2013)  
Frank P. Lloyd, Jr. (2013)  
Andrew L. Morrison (2013)  
David L. Patterson (2013)  
Kenny E. Stall (2013)  
Ronald L. Young, II (2013)

William C. Buffie (2014)  
Brian D. Clarke (2014)  
Robert E. Dicks (2014)  
Doris M. Hardacker (2014)  
Douglas J. Horton (2014)  
Daniel E. Lehman (2014)  
Ramana S. Moorthy (2014)  
Maria C. Poor (2014)  
Philip W. Pryor (2014)  
Jason E. Rieser (2014)  
Steven M. Samuels (2014)  
Kenneth N. Wiesert (2014)

James P. Bastnagel (2015)  
John H. Ditslear, III (2015)  
Robert S. Flint (2015)  
Tod C. Huntley (2015)  
Norman Mindrebo (2015)  
Robert Michael Pearce (2015)  
David M. Ratzman (2015)  
Michael A. Rothbaum (2015)  
Jeffrey M. Rothenberg (2015)  
Richard M. Storm (2015)  
Jeremy T. Sullivan (2015)  
H. Jeffery Whitaker (2015)  
Allison E. Williams (2015)  
Steven L. Wise (2015)

### Indiana State Medical Association Past Presidents

Jon D. Marhenke 2007-2008  
Bernard J. Emkes, 2000-2001  
Peter L. Winters, 1997-1998  
William H. Beeson, 1992-1993  
George H. Rawls, 1989-1990  
John D. MacDougall, 1987-1988  
George T. Lukemeyer, 1983-1984  
Alvin J. Haley, 1980-1981

### Indiana State Medical Association House of Delegate

**Speaker, ISMA**  
John J. Wernert (2012-2013)

### Vice-Speaker, ISMA

Heidi M. Dunniway (2012-2013)

### Seventh District Medical Society Trustees

Richard D. Feldman (2013)  
Vicki M. Roe (2014)  
John P. McGoff (2015)

### Alternate Trustees

Robert A. Malinzak (2013)  
Marc E. Duerden (2014)  
John C. Ellis (2015)

### TYPES of PAIN TREATED

- Acute & Chronic Back Pain
- Cervical Spine (Neck) Pain & Related Headaches
- Herniated Discs
- Degenerative Disc Disease
- Sciatica / Radiculopathy
- Spinal Facet Syndrome
- Spinal Stenosis (Lumbar & Cervical)
- Spondylosis (Spinal Arthritis)
- Work & Sports Related Injuries

### AVAILABLE TREATMENTS

- SELECTIVE ENDOSCOPIC DISCECTOMY (SED)
- Fluoroscopic Epidural Steroid Injections (Cervical, Thoracic & Lumbar)
- Nerve Blocks (Diagnostic & Therapeutic)
  - Sympathetic Nerve Blocks
  - Fluoroscopic Selective Nerve Blocks
- Facet Joint Injections
- Sacroiliac Joint Injections
- Radiofrequency Procedures
  - Facet Denervation
  - Rhizotomy
  - Sympathectomy
- Nucleoplasty
- Neuroplasty
- Discography
- IntraDiscal ElectroThermal Annuloplasty (IDET)
- Spinal Cord Stimulation



Avon | Carmel | Kokomo | Mooresville

phone **317.815.8950**

fax **317.815.8951**

toll free **866.815.8950**

**www.midwestpain.net**

# CME & Conferences

## Community Health Network

### Community Hospital East

First  
Wednesday Critical Care Conference  
Medical Staff Conf. Room, 12:00 - 1:00 p.m.

Second  
Wednesday Medical Grand Rounds  
Medical Staff Conf. Room, 12:00 - 1:00 p.m.

### Community Hospital North

First  
Wednesday Pediatric Grand Rounds  
Multi Services Rooms 1 & 2  
7250 Clearvista Dr. 7:30 - 8:30 a.m.

First  
Friday North Forum  
Reilly Board Room; 12:00 - 1:00 p.m.

Every Other  
Thursday Psychiatry Grand rounds  
7250 Clearvista Dr.  
begin 1/24/13 Multi-Service Rms. 1 & 2 7:30 - 8:30 a.m.

### Community Heart & Vascular/ Indiana Heart Hospital

First  
Wednesday Imaging Conference:  
rotates Cath & Echo Case Presentations  
CHVH MCV Boardroom Videoconference to  
HVC Anderson Office, HVC East Office BR (Ste. 420)  
HVC South Office CR (Suite 2400)  
7:00 - 8:00 a.m.

Third  
Wednesday Ken Stanley CV Conference  
CHVH MCV Boardroom Videoconference to  
HVC Anderson Office, HVC East Office BR (Ste. 420)  
HVC South Office CR (Suite 2400)  
7:00 - 8:00 a.m.

Fourth  
Wednesday Disease Management Conference:  
rotates CHF & EP Case Presentations  
CHVH MCV Boardroom Videoconference to  
HVC Anderson Office, HVC East Office BR (Ste. 420)  
HVC South Office CR (Suite 2400)  
7:00 - 8:00 a.m.

## Cancer Conferences

### Community Hospital East:

Third  
Thursday East General Cancer Conference  
Medical Staff Conf. Room  
12:00 to 1:00 p.m.

Fourth  
Tuesday East Multidisciplinary Breast Cancer Conference  
Medical Staff Conference Room  
7:00 to 8:00 a.m.

### Community Hospital North

First & Third  
Tuesdays North Multidisciplinary Breast Conference  
8040 Clearvista Parkway, Suite 550  
7:00 - 8:00 a.m.

Every Other  
Friday N. General Cancer Conference  
8040 Clearvista Parkway, Suite 550  
begin 1/18/13 7:00 - 8:00 a.m.

First  
Wednesday North Chest Cancer Conference  
8040 Clearvista Parkway, Suite 550  
7:00 - 8:00 a.m.

Third  
Wednesday Melanoma Cancer Conference  
8040 Clearvista Parkway, Suite 550  
7:30 - 8:30 a.m.

### Community Hospital South

Third  
Wednesday South Multidisciplinary  
Breast Cancer Conference  
Community Breast Care Center South,  
533 E. County Line Rd., Ste. 101, 8:00 - 9:00 a.m.

For more information, contact Valerie Brown, (317) 355-5381.

## Indiana University School of Medicine/ Indiana University Health

### IU – Methodist – Riley

Sept. 5 Pharmacogenomics in Clinical Practice -  
What you need to know  
IU Health Neuroscience Center, Indianapolis

Sept. 11 Advancing the Medical Role in Child Protection  
The Lerner Theater Crystal Ballroom  
Elkhart, Indiana

Sept. 13 Updates in Pediatric Gastroenterology for the  
Primary Care Clinician  
IU Health North Hospital, Carmel, Indiana

Sept. 19 1st Annual IUSM Brain Injury Symposium:  
The Medical & Rehabilitation Care Continuum  
IU Health Neuroscience Center,  
Goodman Hall, Indianapolis

Sept. 21 Practical Pearls General and  
Community Pediatrics 2013  
Riley Outpatient Center, Indianapolis

Oct. 3-4 Building a Comprehensive Home Dialysis Program  
JW Marriott Indianapolis, Indianapolis

Oct. 3-4 Emergency Medicine and Trauma Conference  
for Advanced Providers  
Fairbanks Hall, Indianapolis

Oct. 4 Third Annual IU Neonatology Symposium  
IUPUI Campus Center, Indianapolis

Oct. 10 Lung Transplantation: Navigating Future  
Challenges with the Experience of the Past  
IU Health Neuroscience Center, Indianapolis

Nov. 1 1st Annual IU Health/Methodist Hospital  
Trauma Orthopedic Symposium  
Hyatt Regency, Indianapolis

Nov. 14 Radiology for the Advanced Provider  
Riley Outpatient Center, Indianapolis

2014  
Jan. 25 Breast Cancer: Year in Review  
Indiana History Center

Course dates and locations are subject to change. For more information, please visit <http://cme.medicine.iu.edu> or call 317-274-0104.

The Indiana University School of Medicine is accredited by the ACCME to provide continuing medical education for physicians.

We have more than 100 recurring meetings available. For a listing or more information, please visit <http://cme.medicine.iu.edu> or call 317-274-0104.

## PHA Academy

December 3-4, 2013, Indianapolis Indiana

The PHA Academy is hosted by Purdue Healthcare Advisors. Participants have the option of attending the entire two-day training seminar or choosing up to four of the following eight workshop offerings: Stage 2 Meaningful Use for Physicians; Stage 2 Meaningful Use for Hospitals; Responsibly Mobile™; How to keep ePHI secure on the go (for the non-IT professional); The High-Performing Practice; PCMH Made Simple: The Factor Path™; The Engaged Patient is Here; High-Consequence Care; and Building Blocks for a Lean Quality Transformation. The cost of each half-day workshop plus lunch is \$295. Questions contact: Sheila Kelty, Purdue Healthcare Advisor, (574) 276-9942. Register at <http://pha.purdue.edu/events>

## CME & Conferences

### Indianapolis Medical Society

#### September

- 11 Senior/Inactive Luncheon Meeting, 11:30 AM, Society, Speaker James A. Glass, PhD, Principal, Historic Preservation & Heritage Consulting LLC, Topic: "Historic Preservation in Indianapolis"
- 17 IMS Board, Society, 6:00 PM, Social; 6:30 PM, Dnr/Mtg. Light dinner. Dr. Mark Hamilton will be installed as 140th IMS President. NO SPEAKER
- 20 ISMA BOT, Indianapolis JW Marriott, 10 S. West St., Indpls., 46204. 1:00 PM
- 20-22 ISMA CONVENTION, JW Marriott Hotel, 10 S. West St., Indpls., 46204

#### October

- 15 Executive Committee, Society, 6:00 PM, Sandwiches
- 30 ISMA's Fall Legislative Dinner, Indy Marriott Downtown

#### November

- 10 IMS Advisory Breakfast, 7:30 AM prior to ISMA BOT @ 9:00 AM, State Hdqtrs.
- 16-19 AMA House of Delegates
- 19 IMS Board, Society, 6:00 PM, Social; 6:30 PM, Dnr/Mtg

#### December

- 11 Senior/Inactive Luncheon Meeting, 11:30 AM, Society TBD
- 17 Executive Committee Holiday Dinner, with Spouses/Guests

### Glick Eye Institute Vision Research

**October 25, 2013**  
Indianapolis Indiana

The fourth annual Vision Research Symposium held by the Department of Ophthalmology at the Eugene and Marilyn Glick Eye Institute is scheduled for Friday, Oct. 25.

The keynote speaker will be Colm O'Brien, M.D., of University College Dublin in Ireland. Dr. O'Brien is the lead clinician in the Department of Ophthalmology at Mater Misericordiae University Hospital, a teaching hospital in the north inner city of Dublin. He is a member of the Glaucoma Program Committee of the Association for Research in Vision and Ophthalmology and has served on multiple boards and committees for ophthalmology and glaucoma associations.

Dr. O'Brien's research interests include matrix (differential gene expression) and vascular (endothelial dysfunction) biology in glaucoma; health services research; retinal ganglion cell apoptosis; phenotyping/genotyping of glaucoma patients; and proteomics of pseudo-exfoliation glaucoma.

All presentations will take place in Spitzberg Hall at the Glick Eye Institute, 1160 W. Michigan St. The day will begin with a continental breakfast and registration at 7:30 a.m. and is expected to conclude by 5 p.m.

The cost to attend is:

- \$50 for MD/OD/DO/PhD participants
- \$35 for postdoctoral participants
- Free for students, residents, fellows and staff

Meals (breakfast, lunch and break service) will be provided along with conference materials. Continuing medical education credits will not be provided for this symposium. Information on uploading abstracts, due Friday, Sept. 20, and registration is available: <http://iueye.iu.edu/symposium/>

*Submit CME for the Bulletin (deadline is the first of the month preceding publication) by emailing [mhadley@imsonline.org](mailto:mhadley@imsonline.org)*

**Recruit-a Colleague!**  
**Energetic Voices**  
**Are Needed**  
**for Today's Medicine.**

### Specialists in the Care of Adult and Childhood Spinal Diseases

THE  
SPINE  
INSTITUTE



#### Services:

The Spine Institute provides conservative and surgical care of adult and pediatric disorders. The physicians offer expertise in all areas of

Spine care including:

- Disc diseases, herniations and stenosis
- Scoliosis/Deformity – Adult & Pediatric
  - Spine fractures
  - Spine tumors
- Degenerative neck and back disorders
  - Revision surgery
- Congenital disorders
- Spinal cord stimulation
- Workers' compensation

#### Physician Referral:

When acute disorders require more aggressive approaches, or when recovery is extended and threatens to become chronic, The Spine Institute stands as a partner to physicians in providing specialized spine evaluations, surgical opinions and rehabilitation. Continuity of care is the goal of our practice and patients are returned to referring physicians with timely reports and full documentation.

**Philip Pryor, MD and James Hardacker, MD**  
**St. Vincent Carmel Medical Pavilion**

13431 Old Meridian Street  
2nd Floor, Suite 200,  
Carmel, Indiana 46032

**(317) 573-7733**

**[www.spineinstituteindy.com](http://www.spineinstituteindy.com)**

# Photo Gallery - "Juleps in July"

The IU Center of Excellence in Women's Health and the Indianapolis Medical Society hosted a delightful evening of Wednesday, July 31, 2013, "Juleps in July." The networking and fund-raising event for women physicians and scientists was held at the home of Drs. Theresa Rohr-Kirchgraber and Paul Kirchgraber. The evening supported two projects that help the underserved in Indiana: Project Health (Indianapolis Medical Society Foundation) and the IU Center of Excellence Wellness on Wheels Bus (IU Foundation - COE). Drs. Richard Rhodes and John Wernert served as Juleps mixologists.



*Photos courtesy of IMS Staffer, Becky Collis, and Teri Duell of the IU Center of Excellence in Women's Health, Indiana University School of Medicine.*

## Support your IMS Foundation!



## Good Medicine.

We know that good medicine comes down to one-on-one interaction with your patients. We think great banking is the same! The Private Banking group is ready for you on your schedule, just call us and we'll come to you! With over 100 years of serving the medical community we are a full service bank providing our customers with a full suite of financial services including:

- MEDICAL BANKING ACCOUNT
- MEDICAL EQUIPMENT LEASING
- ACQUISITION FINANCING
- MEDICAL PRACTICE LOANS
- LOANS & LINES OF CREDIT
- MUCH MORE!

## Stock Yards Bank & Trust

SINCE 1904

### PRIVATE BANKING GROUP

DOWNTOWN:  
136 East Market St.  
Indianapolis, IN 46204  
(317) 238-2800

CARMEL OFFICE:  
11450 N. Meridian St.  
Carmel, IN 46032  
(317) 238-2831

BINFORD OFFICE:  
6840 Lake Plaza Dr.  
Indianapolis IN 46220  
(317) 238-2860

A TRUSTED PARTNER, since 1904.

SYB - NMLS# 433971



# In Summary

## Policy, pay changes for 2014 Medicare fee schedule unveiled in proposed rule

A proposed rule released in July calls for changes to the Medicare Physician Fee Schedule in 2014 that include support for complex chronic care management, expansion of the value-based payment modifier and updates to Medicare quality reporting programs.

"Currently, Medicare only pays for primary care management services as part of a face-to-face visit," the Centers for Medicare & Medicaid Services (CMS) stated in an accompanying fact sheet. "In the proposed rule, in order to support primary care, CMS proposes to make a separate payment to physicians for managing select Medicare patients' care needs beginning in 2015."

Under the proposed rule, physicians caring for Medicare patients with two or more significant chronic conditions would be eligible to receive payment for maintaining a plan of care and providing such coordination services as communicating with other treating health professionals and managing medications.

This proposal responds to a care coordination model developed by the CPT® Editorial Panel and the AMA/Specialty Society Relative Value Scale Update Committee. The AMA will continue to work with CMS to ensure that the final model implemented in 2015 allows physicians to provide the maximum benefit to Medicare patients.

CMS also proposes expanding the value-based payment modifier program, which will adjust physician payments based on cost and quality data. Instead of applying to practices with 100 or more eligible providers, the program will apply to practices with just 10 or more eligible providers and will increase the potential penalty to 2 percent.

Another significant proposal is downgrading rates for more than 200 "misvalued" codes so that payments for services provided in a physician's office would be capped at a rate that is equal to the combined payments to the facility and the physician when the same service is provided in a hospital outpatient department or ambulatory surgical center.

This change ignores the fact that hospital outpatient departments are paid a rate that is averaged across a group of services that can vary significantly in costs. For hospitals, payments above and below the cost of the service are assumed to average out over time. But physicians who often don't perform the full range of services in the group cannot offset losses on some services with profits on others.

Other changes set forth in the 600-page proposed rule include revisions to measures and reporting requirements for such Medicare programs as the Physician Quality Reporting System and the electronic health record meaningful use program.

The AMA reviewed the proposed rule and submitted detailed comments by the Sept. 6 deadline. Physicians who would like to submit their own comments to CMS can view instructions for doing so in the first two pages of the proposed rule.

Additional information about the proposed rule is available in CMS fact sheets about the rule's policy and payment changes [External Link](#) and changes to the quality programs [External Link](#). The final rule is expected to be issued in early November. (*Courtesy of AMA Wire, July 2013*)

## Free Cessation Help for Your Patients

Two free tobacco cessation programs in Indiana work hand-in-hand to help patients stop using tobacco. The Indiana Tobacco Quitline (1-800-QuitNow) is a free, telephone-based, tobacco cessation program for all residents of Indiana, 18 years old and over. Specially trained Quit Coaches work with the user to develop an individualized quit plan. Patients can call 1-800-QuitNow directly or they may be referred via FAX by a health care provider who is a Preferred Provider within the Quit Now Network. A Preferred Provider receives:

- Fax Referral Privileges plus FAX forms; the initial call is made by a Quit Coach™ to the tobacco user.
- Status reports on fax referred patients: did the patient answer the Quitline call, enroll in the program and/or plan a quit date.
- Free Quitline literature for patient and provider use.

There is no charge for these services. To enroll as a Preferred Provider go to: <http://www.in.gov/quitline/2358.htm>. For more information, contact Lynne Arrowsmith, RRT, Tobacco Cessation Specialist, Marion County Public Health Dept. at 317-221-2084; [larrowsmith@hhcorp.org](mailto:larrowsmith@hhcorp.org).

Funding to the Tobacco Prevention and Cessation Commission at the Indiana State Department of Health comes from Indiana's portion of the 1998 Master Tobacco Settlement Agreement. In 1998, 46 states settled with several tobacco companies for misleading marketing claims and loss of life and medical expenses through Medicaid.

The Quitline provides an intensive counseling option not feasible in busy clinic environments. Counseling in combination with a FDA approved cessation medication creates the strongest chance of cessation success. TPC's cessation specialists provide additional advice and consultation. 10 Reasons to Vaccinate Children against HPV Infection <http://connect.iu.edu/p9rzmcn4e8y/>

Cervical Cancer Screening for the Rural, Underserved and Underinsured Patients <http://connect.iu.edu/p9u46pqqpb/> ,

Myths and Facts about the HPV Vaccine and the Prevention of Cervical Cancer <http://connect.iu.edu/p41bzum26xk/>

## Advertisers' Index

Center for Pain Management .....	10
Chernoff Cosmetic Surgeons.....	2
Diamond Capital Management.....	9
Favorite Healthcare Staffing .....	17
Franciscan St. Francis Carmel .....	8
Franciscan St. Francis Ortho, Mooresville .....	17
Goodman Campbell Brain & Spine .....	13
IC System.....	25
ISMA Insurance Agency/Brown & Brown.....	25
JWM Neurology .....	27
The Marina Limited Partnership .....	3
Midwest Pain & Spine.....	19
The National Bank of Indianapolis .....	4
Northwest Radiology Network .....	28
Prescription Drug Abuse Prevention 2013 .....	26
ProAssurance Insurance.....	6
The Spine Institute.....	21
Stock Yards Bank.....	23
Superior Linen Service .....	25



# Take Advantage of the Purchasing Power of ISMA Insurance

As the ISMA's endorsed insurance partner, we provide comprehensive insurance solutions for physicians and their practices.

- Group Health Insurance
- Individual Health Insurance
- Health Savings Account (HSA)
- Voluntary Employee Benefits
- Disability Insurance
- Life Insurance
- Homeowners/Auto
- Umbrella Liability
- Business Owners Policy
- Dental Insurance
- Medicare Carve-Out
- Long Term Care Insurance
- Workers' Compensation
- Medical Malpractice\*

These insurance plans have been specifically designed for ISMA members and their employees to provide the highest quality coverage at the lowest possible cost.



*Brown & Brown of Indiana doing business as the ISMA Insurance Agency.*



Brownsburg • Carmel • Newburgh

(317) 471-4229 • (877) 647-2242 • [www.ismaia.com](http://www.ismaia.com)

\* Access is available through Pro Assurance Indemnity Co., Inc. – ISMA's endorsed professional liability carrier.

## Great DISCOUNT Due to Collections Since '38!

I.C. System is celebrating 75 YEARS of collections! Beyond your **20% IMS Member Discount**, ask about the **special Anniversary Discount**.

- Flat Fee and Contingency Collection Programs
- Skilled, Certified HEALTHCARE Collectors
- HIPAA Compliance; Patient-Friendly Focus
- Dedicated Client Service; 24/7 Online Tools

**800-279-3511**  
[www.icmemberbenefits.com](http://www.icmemberbenefits.com)

[www.icmemberbenefits.com](http://www.icmemberbenefits.com)  
FOR THESE  
FREE RESOURCES:



■ *Nice People Can Collect* WEBINAR

■ *THE INSIDE FACTS* BOOKLET of Tips

## CREATE AN IMAGE™

With



### Specialists in Healthcare Linen Services

- We will **launder** the linens, uniforms, and professional clothing that you already own.
- We will **rent** and **launder** linens, uniforms, and professional clothing.
- We will **sell** linens, uniforms, and professional clothing.
- We will **rent, sell, and launder** linens, uniforms, and professional clothing in any combination.
- We will **pick up and deliver** to your place of business.
- Samples of our products are available for your inspection.
- **We practice universal precaution standards.**
- For a free price quote or further explanation of our services . . . please call:

**In Indianapolis: 634-0833**

**In Muncie: 284-4411**

medical societies). This can lead to real change both locally and nationally in terms of future health care policy.

### Networking Opportunities

We offer social and professional networking events to help you get to know our more than 1,500 member physicians.

For example, for the past two summers we have hosted "Juleps in July," a networking event for women physicians, scientists, and the men who support them. On October 10<sup>th</sup>, IMS will be participating in ISMA's Fall Legislative Dinner.

Our Annual 7th District Meeting provides physicians and their families in Hendricks, Johnson, Marion and Morgan Counties the opportunity to meet and elect representatives at a family-oriented event.

I recently attended our 50-year member luncheon – Dr. Goens kicked things off with a short speech on the present state of and upcoming changes in health care. This led to a lively discussion that should have been heard by our health care leaders. These honored members and their spouses' then enjoyed a fantastic Sullivan's lunch. This event serves as an excellent example of the Indianapolis Medical Society's efforts to recognize physicians and promote physician discussion of health care.

The *IMS Bulletin* is a monthly magazine featuring information about your colleagues and other issues facing healthcare. It is a great opportunity to highlight how physicians in Central Indiana are getting involved and excelling in their fields.


And of course, the charitable arm of the organization, The Indianapolis Medical Society Foundation provides scholarships to medical, nursing and other allied health professionals; funds programs to encourage healthier personal and professional lifestyles for medical and health professionals and their families; funds educational programs of personal and professional natures for medical and health professions; and promotes volunteerism among medical and health professionals.

I look forward to serving as president of the Indianapolis Medical Society over the coming year. I am committed to growing the organization while strengthening our commitment to the medical profession and the community as a whole.

I encourage all of you to take an active role within the Indianapolis Medical Society as we look for new ways to educate members about the ever changing landscape of the medical profession. I look forward to building new and exciting partnerships and finding opportunities to generate exposure and recognition for our members.

### References

1. <http://politicalticker.blogs.cnn.com/2013/07/02/key-obamacare-provision-delayed/>
2. <http://www.foxnews.com/politics/2013/07/18/house-votes-delay-obamacare-mandates/>




## Get the facts Know the signs

(Prescription drug abuse has reached epidemic levels.)

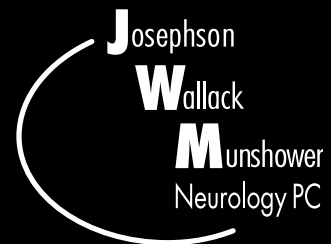
- Every 25 minutes someone dies from a prescription drug overdose.
- More people abuse prescription drugs than cocaine, heroin, hallucinogens, and inhalants combined.
- One in 20 people have used prescription pain killers for non-medical reasons.
- Middle-aged adults are the most likely to overdose from prescription painkillers.
- One in five Indiana teens have admitted to abusing prescription drugs.

The Indiana Prescription Drug Abuse Task Force wants Hoosiers to learn more about the dangers of prescription drug abuse and misuse, how to prevent it and how to talk to others about it at [BitterPill.IN.gov](http://BitterPill.IN.gov). Because this is one bitter pill we don't have to swallow.



Paid for by the Indiana Attorney General Consumer Protection settlement fund.

# PATIENTS WITH EPILEPSY AND SEIZURES



Comprehensive Neurological Expertise  
Compassionate Patient Care

More than two million Americans of all ages suffer from **Epilepsy or Seizures**. Seizures can occur during sleep and wake hours and can include the following symptoms:

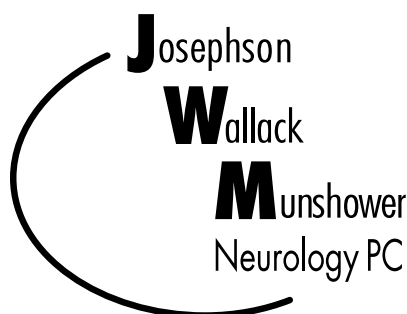
- Unexplained loss of consciousness
- Abnormal sleep behavior
- Apnea
- Syncope
- Memory loss
- Staring spells
- Nighttime spells



## VIDEO EEG MONITORING

JWM Neurologists diagnose and treat adults and children who have Epilepsy and all types of seizures. They also have expertise in Video EEG Monitoring — a specialized form of EEG which constantly monitors the patient on a video screen. Video EEG testing allows for observation of brainwave activity when a seizure or “spell” is occurring. This aids in a more specific diagnosis and effective treatment recommendation.

For a patient referral, call us at  
**317-308-2800. Press Zero**



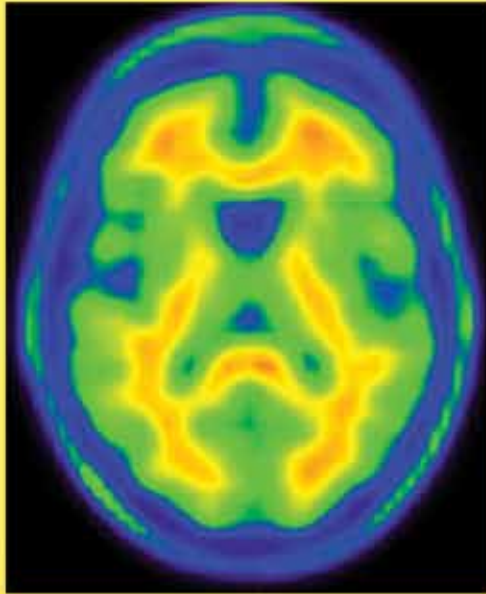
Comprehensive Neurological Expertise  
Compassionate Patient Care

1400 N. RITTER AVE. .... INDIANAPOLIS  
7250 CLEARVISTA DR. .... INDIANAPOLIS  
8402 HARCOURT RD. .... INDIANAPOLIS  
8051 S. EMERSON AVE. .... INDIANAPOLIS  
12188 N. MERIDIAN ST. .... CARMEL  
1001 HADLEY RD. .... MOORESVILLE  
1159 W. JEFFERSON ST. .... FRANKLIN  
2330 S. DIXON RD. .... KOKOMO  
2101 JACKSON ST. .... ANDERSON  
1601 MEDICAL ARTS BLVD. .... ANDERSON  
1331 SOUTH A ST. .... ELWOOD

.....  
[jwmneuro.com](http://jwmneuro.com) [jwmneuro.blogspot.com](http://jwmneuro.blogspot.com)

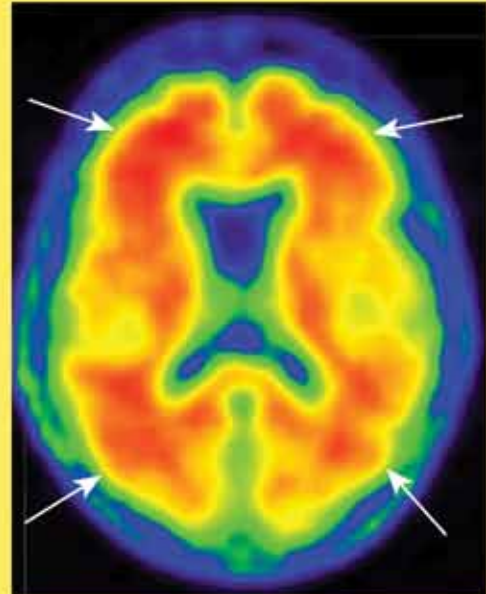
# ***Now Available In Indianapolis!***

## ***PET-CT Tracer to Help Diagnose Alzheimer's Disease ...and Memory Disturbances***



### **Negative Scan**

*A negative Amyvid scan indicates that a person has few or no amyloid plaques – consistent with no presence of Alzheimer's Disease.*



Arrows Indicate Amyloid Neuritic Plaques

### **Positive Scan**

*A positive scan indicates moderate to frequent amyloid plaques – consistent with a pathological diagnosis of AD. However, this amount of plaque can also present in other neurological conditions as well as in older adults with normal mental functioning.*

The first and only FDA-approved PET-CT tracer, Amyvid, is now available for use in testing patients being evaluated for Alzheimer's Disease and other causes of cognitive decline.

To schedule a scan or for more information, call 317-XRAY NOW (972-9669), or toll-free 800-400-9729.